



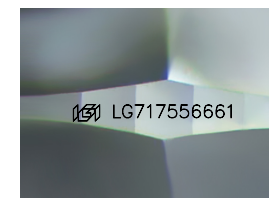
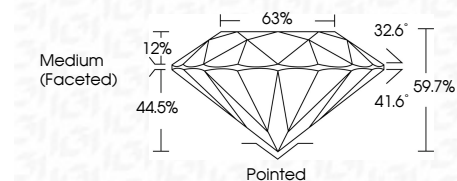
ELECTRONIC COPY

LG717556661
Report verification at igi.org



June 20, 2025
IGI Report Number LG717556661
Description LABORATORY GROWN DIAMOND
Shape and Cutting Style ROUND BRILLIANT
Measurements 8.18 - 8.24 X 4.91 MM

GRADING RESULTS
Carat Weight 2.01 CARATS
Color Grade D
Clarity Grade VVS 2
Cut Grade EXCELLENT



Sample Image Used

ADDITIONAL GRADING INFORMATION
Polish EXCELLENT
Symmetry EXCELLENT
Fluorescence NONE
Inscription(s) IGI LG717556661
Comments: This Laboratory Grown Diamond was created by Chemical Vapor Deposition (CVD) growth process. Type IIa



June 20, 2025
IGI Report No LG717556661
ROUND BRILLIANT
8.18 - 8.24 X 4.91 MM
2.01 CARATS
D
VVS 2
EXCELLENT
59.7%
63%
Medium (Faceted)
Pointed
EXCELLENT
EXCELLENT
NONE
IGI LG717556661
Comments: This Laboratory Grown Diamond was created by Chemical Vapor Deposition (CVD) growth process. Type IIa

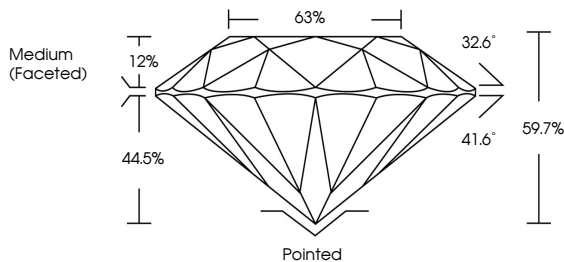
June 20, 2025
IGI Report Number LG717556661
Description LABORATORY GROWN DIAMOND
Shape and Cutting Style ROUND BRILLIANT
Measurements 8.18 - 8.24 X 4.91 MM

GRADING RESULTS
Carat Weight 2.01 CARATS
Color Grade D
Clarity Grade VVS 2
Cut Grade EXCELLENT

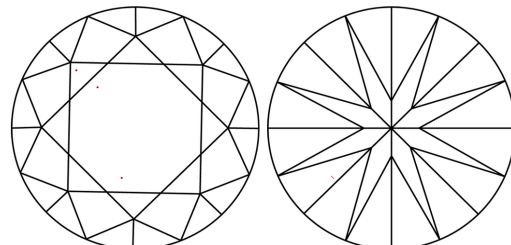
ADDITIONAL GRADING INFORMATION
Polish EXCELLENT
Symmetry EXCELLENT
Fluorescence NONE
Inscription(s) IGI LG717556661

Comments: This Laboratory Grown Diamond was created by Chemical Vapor Deposition (CVD) growth process. Type IIa

PROPORTIONS



CLARITY CHARACTERISTICS



KEY TO SYMBOLS
Red symbols indicate internal characteristics.
Green symbols indicate external characteristics.

Table with columns: D, E, F, G, H, I, J, Faint, Very Light, Light

Table with columns: IF, WS 1-2, VS 1-2, SI 1-2, I 1-3

Table with columns: Internally Flawless, Very Very Slightly Included, Very Slightly Included, Slightly Included, Included

