

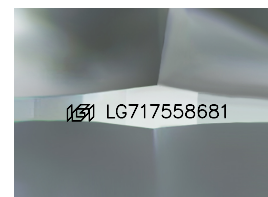
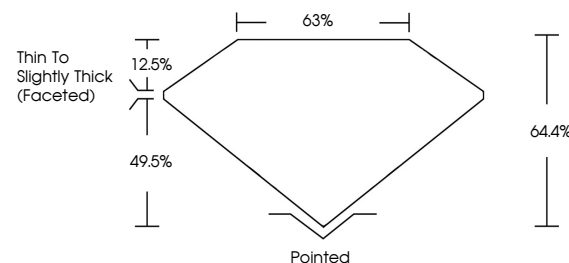


**ELECTRONIC COPY**

## LABORATORY GROWN DIAMOND REPORT

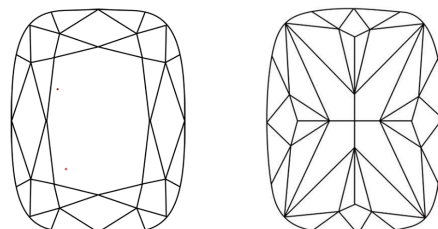
LG717558681  
Report verification at [igi.org](https://igi.org)

## PROPORTIONS



Sample Image Used

## CLARITY CHARACTERISTICS



## KEY TO SYMBOLS

Red symbols indicate internal characteristics.  
Green symbols indicate external characteristics.

## COLOR

D E F G H I J Faint Very Light Light

## CLARITY

IF      VWS<sup>1-2</sup>      VS<sup>1-2</sup>      SI<sup>1-2</sup>      I<sup>1-3</sup>

Internally Flawless	Very Very Slightly Included	Very Slightly Included	Slightly Included	Included
------------------------	--------------------------------	---------------------------	----------------------	----------

## LABORATORY GROWN DIAMOND REPORT



July 2, 2025

IGI Report Number **LG717558681**Description **LABORATORY GROWN DIAMOND**

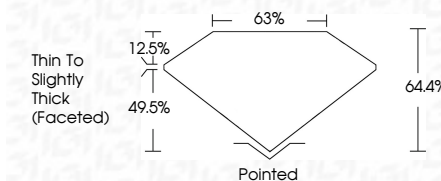
Shape and Cutting Style **CUSHION MODIFIED  
BRILLIANT**

Measurements 15.90 X 11.60 X 7.47 MM

## GRADING RESULTS

Carat Weight 10.39 CARATS

Color Grade F

Clarity Grade WS 2

### ADDITIONAL GRADING INFORMATION

Polish **EXCELLENT**Symmetry **EXCELLENT**Fluorescence **NONE**Inscription(s)  LG717558681

Comments: This Laboratory Grown Diamond was created by Chemical Vapor Deposition (CVD) growth process.  
Type IIa

[illegible]