



ELECTRONIC COPY

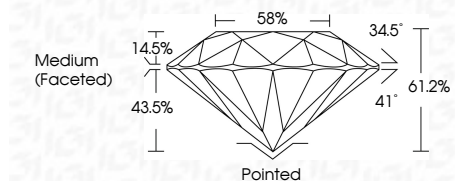
LG717566973
Report verification at igi.org



September 22, 2025
IGI Report Number **LG717566973**
Description **LABORATORY GROWN DIAMOND**
Shape and Cutting Style **ROUND BRILLIANT**
Measurements **9.75 - 9.84 X 5.99 MM**

GRADING RESULTS

Carat Weight **3.51 CARATS**
Color Grade **E**
Clarity Grade **VS 2**
Cut Grade **IDEAL**

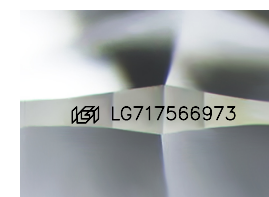


ADDITIONAL GRADING INFORMATION

Polish **EXCELLENT**
Symmetry **EXCELLENT**
Fluorescence **NONE**
Inscription(s) **IGI LG717566973**
Comments: This Laboratory Grown Diamond was created by Chemical Vapor Deposition (CVD) growth process. Type IIa

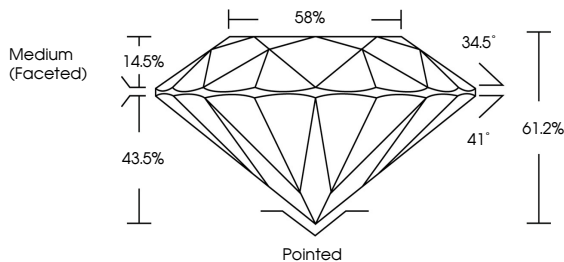


September 22, 2025	IGI Report No LG717566973	3.51 CARATS	E	VS 2	IDEAL	61.2%	58%	Medium (Faceted)	Pointed	EXCELLENT	EXCELLENT	NONE	IGI LG717566973
IGI Report No	LG717566973	Carat Weight	3.51 CARATS	Color Grade	E	Clarity Grade	VS 2	Depth	61.2%	Cut Grade	IDEAL	Table	58%
Shape and Cutting Style	ROUND BRILLIANT	Carat Weight	3.51 CARATS	Color Grade	E	Clarity Grade	VS 2	Depth	61.2%	Cut Grade	IDEAL	Table	58%
Measurements	9.75 - 9.84 X 5.99 MM	Carat Weight	3.51 CARATS	Color Grade	E	Clarity Grade	VS 2	Depth	61.2%	Cut Grade	IDEAL	Table	58%
Grading Results		Carat Weight	3.51 CARATS	Color Grade	E	Clarity Grade	VS 2	Depth	61.2%	Cut Grade	IDEAL	Table	58%
Additional Grading Information		Carat Weight	3.51 CARATS	Color Grade	E	Clarity Grade	VS 2	Depth	61.2%	Cut Grade	IDEAL	Table	58%
Comments	This Laboratory Grown Diamond was created by Chemical Vapor Deposition (CVD) growth process. Type IIa	Carat Weight	3.51 CARATS	Color Grade	E	Clarity Grade	VS 2	Depth	61.2%	Cut Grade	IDEAL	Table	58%

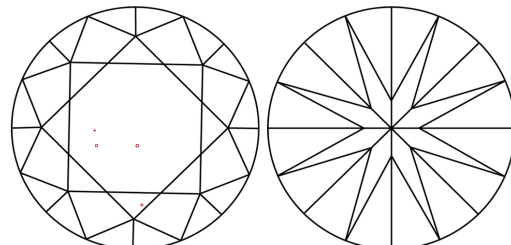


Sample Image Used

PROPORTIONS



CLARITY CHARACTERISTICS



KEY TO SYMBOLS

Red symbols indicate internal characteristics.
Green symbols indicate external characteristics.

COLOR

D	E	F	G	H	I	J	Faint	Very Light	Light
---	---	---	---	---	---	---	-------	------------	-------

CLARITY

IF	VS ¹⁻²	VS ¹⁻²	SI ¹⁻²	I ¹⁻³
Internally Flawless	Very Very Slightly Included	Very Slightly Included	Slightly Included	Included

