



ELECTRONIC COPY

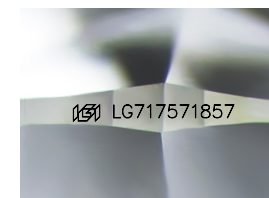
LG717571857
Report verification at igi.org



July 3, 2025
IGI Report Number **LG717571857**
Description **LABORATORY GROWN DIAMOND**
Shape and Cutting Style **SQUARE CUSHION BRILLIANT**
Measurements **8.20 X 8.13 X 5.63 MM**

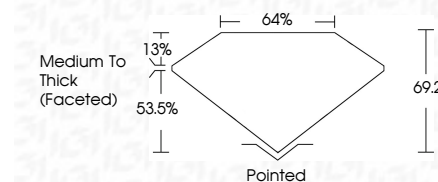
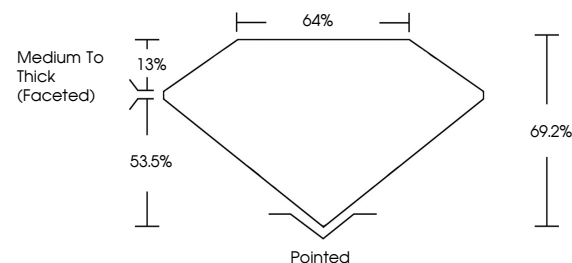
GRADING RESULTS

Carat Weight **2.80 CARATS**
Color Grade **FANCY PINK**
Clarity Grade **VS 1**

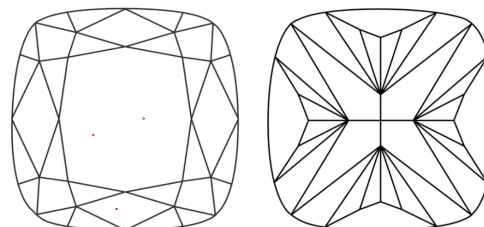


Sample Image Used

PROPORTIONS



CLARITY CHARACTERISTICS



KEY TO SYMBOLS

Red symbols indicate internal characteristics.
Green symbols indicate external characteristics.

COLOR

D E F G H I J Faint Very Light Light

CLARITY

IF WS¹⁻² VS¹⁻² SI¹⁻² I¹⁻³

Internally Flawless Very Very Slightly Included Very Slightly Included Slightly Included Included

ADDITIONAL GRADING INFORMATION

Polish **EXCELLENT**
Symmetry **EXCELLENT**
Fluorescence **STRONG**

Inscription(s) **(IGI) LG717571857**
Comments: This Laboratory Grown Diamond was created by Chemical Vapor Deposition (CVD) growth process. Indications of post-growth treatment.



IGI



July 3, 2025
IGI Report No **LG717571857**
SQUARE CUSHION BRILLIANT
8.20 X 8.13 X 5.63 MM
Carat Weight **2.80 CARATS**
Color Grade **FANCY PINK**
Clarity Grade **VS 1**
Depth **69.2%**
Table **64%**
Girdle **Medium To Thick (Faceted)**
Culet **Pointed**
Polish **EXCELLENT**
Symmetry **EXCELLENT**
Fluorescence **STRONG**
Inscription(s) **(IGI) LG717571857**

Comments: This Laboratory Grown Diamond was created by Chemical Vapor Deposition (CVD) growth process. Indications of post-growth treatment.