



**ELECTRONIC COPY**

LG717595611  
Report verification at igi.org



July 7, 2025  
IGI Report Number **LG717595611**  
Description **LABORATORY GROWN DIAMOND**  
Shape and Cutting Style **ROUND BRILLIANT**  
Measurements **11.74 - 11.82 X 6.94 MM**  
**GRADING RESULTS**  
Carat Weight **5.97 CARATS**  
Color Grade **FANCY VIVID GREEN**  
Clarity Grade **SI 2**  
Cut Grade **EXCELLENT**

July 7, 2025  
IGI Report Number **LG717595611**  
Description **LABORATORY GROWN DIAMOND**  
Shape and Cutting Style **ROUND BRILLIANT**  
Measurements **11.74 - 11.82 X 6.94 MM**

**GRADING RESULTS**

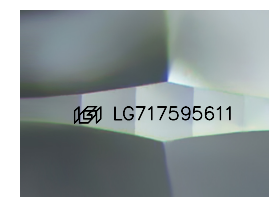
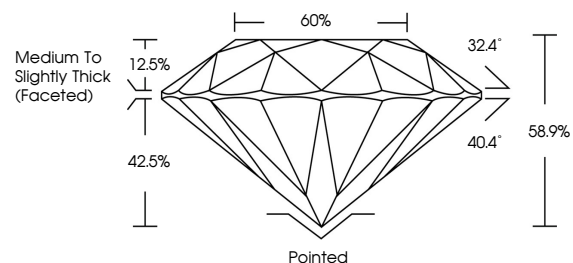
Carat Weight **5.97 CARATS**  
Color Grade **FANCY VIVID GREEN**  
Clarity Grade **SI 2**  
Cut Grade **EXCELLENT**

**ADDITIONAL GRADING INFORMATION**

Polish **EXCELLENT**  
Symmetry **EXCELLENT**  
Fluorescence **VERY SLIGHT**  
Inscription(s) **IGI LG717595611**

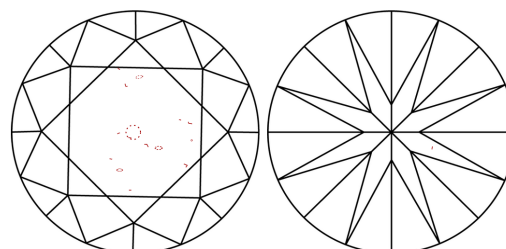
Comments: This Laboratory Grown Diamond was created by Chemical Vapor Deposition (CVD) growth process.  
Indications of post-growth treatment.

**PROPORTIONS**



Sample Image Used

**CLARITY CHARACTERISTICS**



**KEY TO SYMBOLS**

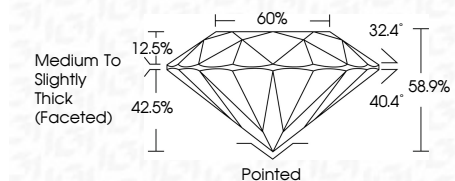
Red symbols indicate internal characteristics.  
Green symbols indicate external characteristics.

**COLOR**

D E F G H I J Faint Very Light Light

**CLARITY**

IF	VS <sup>1-2</sup>	VS <sup>1-2</sup>	SI <sup>1-2</sup>	I <sup>1-3</sup>
Internally Flawless	Very Very Slightly Included	Very Slightly Included	Slightly Included	Included



**ADDITIONAL GRADING INFORMATION**

Polish **EXCELLENT**  
Symmetry **EXCELLENT**  
Fluorescence **VERY SLIGHT**  
Inscription(s) **IGI LG717595611**  
Comments: This Laboratory Grown Diamond was created by Chemical Vapor Deposition (CVD) growth process.  
Indications of post-growth treatment.



July 7, 2025  
IGI Report No LG717595611  
**ROUND BRILLIANT**  
11.74 - 11.82 X 6.94 MM  
5.97 CARATS  
FANCY VIVID GREEN  
SI 2  
EXCELLENT  
58.9%  
60%  
Medium To Slightly Thick (Faceted)  
Pointed  
EXCELLENT  
EXCELLENT  
VERY SLIGHT  
IGI LG717595611  
Comments: This Laboratory Grown Diamond was created by Chemical Vapor Deposition (CVD) growth process.  
Indications of post-growth treatment.