



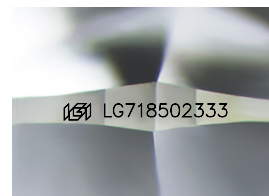
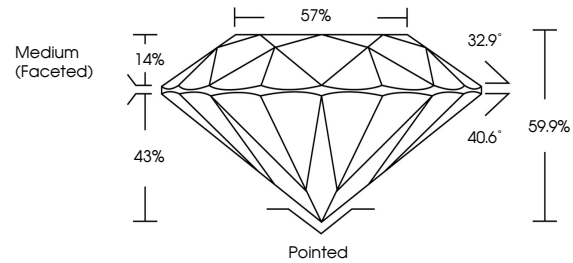
**INTERNATIONAL  
GEMOLOGICAL  
INSTITUTE**

**ELECTRONIC COPY**

## LABORATORY GROWN DIAMOND REPORT

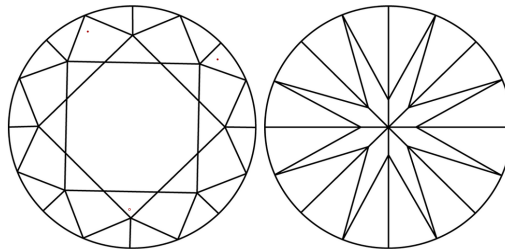
LG718502333  
Report verification at [igi.org](https://igi.org)

## PROPORTIONS



Sample Image Used

## CLARITY CHARACTERISTICS



## KEY TO SYMBOLS

Red symbols indicate internal characteristics.  
Green symbols indicate external characteristics.

## COLOR

D E F G H I J Faint Very Light Light

## CLARITY

IF      WS<sup>1-2</sup>      VS<sup>1-2</sup>      SI<sup>1-2</sup>      I<sup>1-3</sup>

Internally Flawless	Very Very Slightly Included	Very Slightly Included	Slightly Included	Included
------------------------	--------------------------------	---------------------------	----------------------	----------



© IGI 2020, International Gemological Institute

FD - 10 20

**www.igi.org**

LABORATORY GROWN DIAMOND REPORT



June 23, 2025

IGI Report Number **LG718502333**

Description	LABORATORY GROWN DIAMOND
-------------	--------------------------

Shape and Cutting Style **ROUND BRILLIANT**

Measurements **6.81 - 6.84 X 4.09 MM**

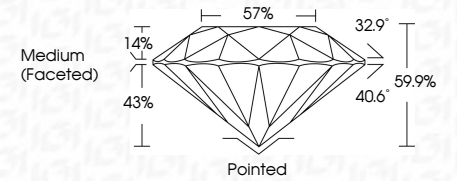
## GRADING RESULTS

Carat Weight **1.16 CARAT**

Color Grade **D**

Clarity Grade VS 1

Cut Grade	IDEAL
-----------	-------



### ADDITIONAL GRADING INFORMATION

Polish **EXCELLENT**Symmetry **EXCELLENT**Fluorescence **NONE**Inscription(s)  LG718502333

Comments: This Laboratory Grown Diamond was created by Chemical Vapor Deposition (CVD) growth process.  
Type IIa



IGI

June 23, 2025	IGI Report No. I971802333	6.61 - 6.84 X 4.09 MM	1.16 CARAT	Vs 1	Pointed	Comments: This Laboratory Grown Diamond was created by Chemical Vapor Deposition (CVD) growth process. Type IId
ROUND BRILLIANT	Color Weight	Color Grade	Clarity Grade	Cut Grade	Polish	
			Depth	Table	Symmetry	
			59%	57%	Excellent	
			Medium (Faced)	Excellent	None	
					I971802333	