



ELECTRONIC COPY

LG718509451
Report verification at igi.org



July 5, 2025
IGI Report Number LG718509451
Description LABORATORY GROWN DIAMOND
Shape and Cutting Style CUSHION MODIFIED BRILLIANT
Measurements 11.05 X 7.44 X 4.79 MM
GRADING RESULTS
Carat Weight 3.22 CARATS
Color Grade FANCY VIVID GREEN
Clarity Grade VVS 2

LABORATORY GROWN DIAMOND REPORT

July 5, 2025
IGI Report Number LG718509451
Description LABORATORY GROWN DIAMOND
Shape and Cutting Style CUSHION MODIFIED BRILLIANT
Measurements 11.05 X 7.44 X 4.79 MM

GRADING RESULTS

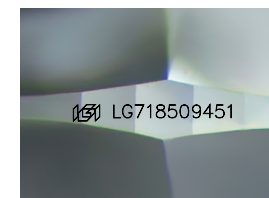
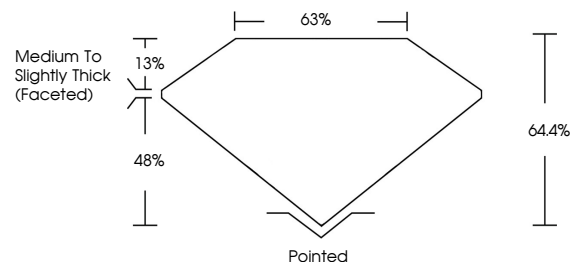
Carat Weight 3.22 CARATS
Color Grade FANCY VIVID GREEN
Clarity Grade VVS 2

ADDITIONAL GRADING INFORMATION

Polish EXCELLENT
Symmetry EXCELLENT
Fluorescence NONE
Inscription(s) IGI LG718509451

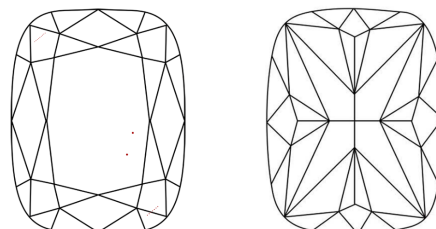
Comments: This Laboratory Grown Diamond was created by Chemical Vapor Deposition (CVD) growth process. Indications of post-growth treatment.

PROPORTIONS



Sample Image Used

CLARITY CHARACTERISTICS



KEY TO SYMBOLS

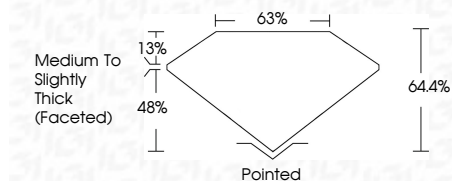
Red symbols indicate internal characteristics.
Green symbols indicate external characteristics.

COLOR

D E F G H I J Faint Very Light Light

CLARITY

IF VVS 1-2 VS 1-2 SI 1-2 I 1-3
Internally Flawless Very Very Slightly Included Very Slightly Included Slightly Included Included



ADDITIONAL GRADING INFORMATION

Polish EXCELLENT
Symmetry EXCELLENT
Fluorescence NONE
Inscription(s) IGI LG718509451
Comments: This Laboratory Grown Diamond was created by Chemical Vapor Deposition (CVD) growth process. Indications of post-growth treatment.



July 5, 2025
IGI Report No LG718509451
CUSHION MODIFIED BRILLIANT
3.22 CARATS
Carat Weight 3.22 CARATS
Color Grade FANCY VIVID GREEN
Clarity Grade VVS 2
Depth 64.4%
Table 63%
Girdle Medium to Slightly Thick (Faceted)
Culet Pointed
Polish EXCELLENT
Symmetry EXCELLENT
Fluorescence NONE
Inscription(s) IGI LG718509451
Comments: This Laboratory Grown Diamond was created by Chemical Vapor Deposition (CVD) growth process. Indications of post-growth treatment.