

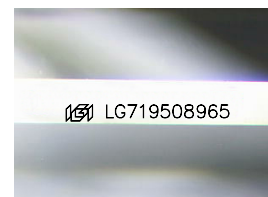
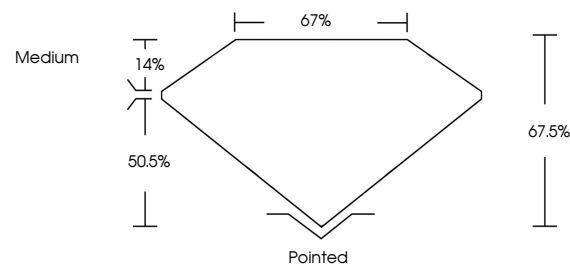


ELECTRONIC COPY

LABORATORY GROWN DIAMOND REPORT

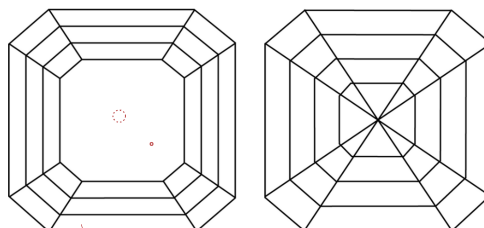
LG719508965
Report verification at igi.org

PROPORTIONS



Sample Image Used

CLARITY CHARACTERISTICS



KEY TO SYMBOLS

Red symbols indicate internal characteristics.
Green symbols indicate external characteristics.

COLOR

D E F G H I J Faint Very Light Light

CLARITY

IF VWS¹⁻² VS¹⁻² SI¹⁻² I¹⁻³

Internally Flawless	Very Very Slightly Included	Very Slightly Included	Slightly Included	Included
------------------------	--------------------------------	---------------------------	----------------------	----------

LABORATORY GROWN DIAMOND REPORT



June 24, 2025

IGI Report Number **LG719508965**Description **LABORATORY GROWN DIAMOND**

Shape and Cutting Style **SQUARE EMERALD CUT**

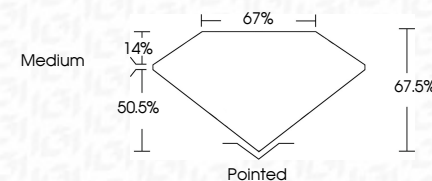
Measurements **5.93 X 5.88 X 3.97 MM**

GRADING RESULTS

Carat Weight **1.25 CARAT**

Color Grade	E
-------------	---

Clarity Grade VS 2



ADDITIONAL GRADING INFORMATION

Polish **EXCELLENT**

Symmetry **EXCELLENT**

Fluorescence **NONE**Inscription(s) LG719508965

Comments: This Laboratory Grown Diamond was created by Chemical Vapor Deposition (CVD) growth process.
Type IIa



June 24, 2025	GI Report No 1671950965	1.25 CARAT	E	VS 2	Polished	Comments: This is a very young Diamond was created by Chemical Vapor Deposition (CVD) growth process. Type Iia
SQUARE EMERALD CUT			67.6%	67%	EXCELLENT	
59.9 X 5.88 X 3.97 MM				Medium	EXCELLENT	
Color Grade					NONE	
Clarity Grade					1691 LG71950965	
Carat Weight						
Table						
Depth						
Girdle						
Culet						
Polish						
Symmetry						
Fluorescence						
Inscriptions(s)						

Comments:
This Laboratory Grown Diamond was created by Chemical Vapor Deposition (CVD) growth process.