



ELECTRONIC COPY

LG719523016
Report verification at igi.org



June 26, 2025

IGI Report Number **LG719523016**

Description **LABORATORY GROWN DIAMOND**

Shape and Cutting Style **HEART BRILLIANT**

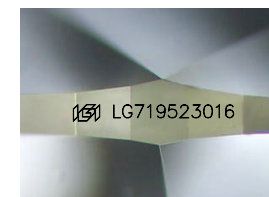
Measurements **8.81 X 10.21 X 5.84 MM**

GRADING RESULTS

Carat Weight **3.10 CARATS**

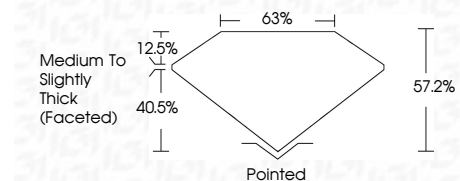
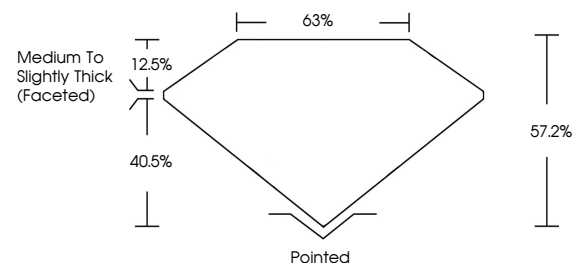
Color Grade **E**

Clarity Grade **VVS 2**

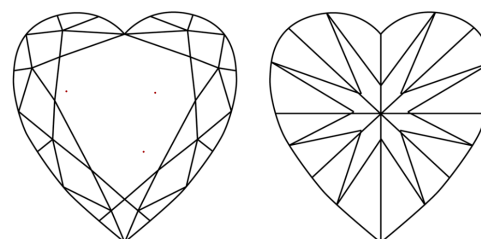


Sample Image Used

PROPORTIONS



CLARITY CHARACTERISTICS



KEY TO SYMBOLS

Red symbols indicate internal characteristics.
Green symbols indicate external characteristics.

COLOR

D E F G H I J Faint Very Light Light

CLARITY

IF VS¹⁻² VS¹⁻² SI¹⁻² I¹⁻³

Internally Flawless Very Very Slightly Included Very Slightly Included Slightly Included Included

ADDITIONAL GRADING INFORMATION

Polish **EXCELLENT**

Symmetry **EXCELLENT**

Fluorescence **NONE**

Inscription(s) **IGI LG719523016**

Comments: This Laboratory Grown Diamond was created by Chemical Vapor Deposition (CVD) growth process.
Type IIa



IGI

June 26, 2025	IGI Report No LG719523016	HEART BRILLIANT	8.81 X 10.21 X 5.84 MM	3.10 CARATS	E	VVS 2	63%	Medium to Slightly Thick (Faceted)	Pointed	EXCELLENT	EXCELLENT	NONE	IGI LG719523016
IGI Report No	IGI Report No	IGI Report No	IGI Report No	IGI Report No	IGI Report No	IGI Report No	IGI Report No	IGI Report No	IGI Report No	IGI Report No	IGI Report No	IGI Report No	IGI Report No

Comments: This Laboratory Grown Diamond was created by Chemical Vapor Deposition (CVD) growth process.
Type IIa