

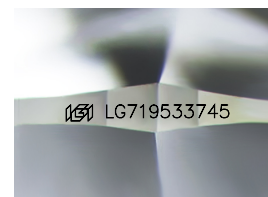
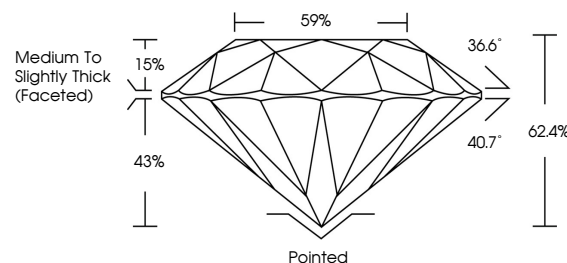


ELECTRONIC COPY

LABORATORY GROWN DIAMOND REPORT

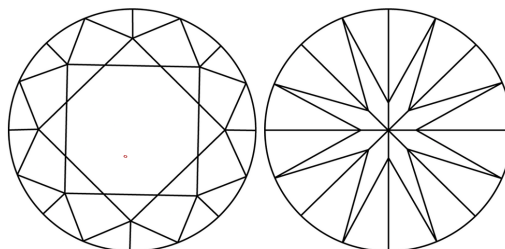
LG719533745
Report verification at igi.org

PROPORTIONS



Sample Image Used

CLARITY CHARACTERISTICS



KEY TO SYMBOLS

Red symbols indicate internal characteristics.
Green symbols indicate external characteristics.

COLOR

D E F G H I J Faint Very Light Light

CLARITY

IF WS¹⁻² VS¹⁻² SI¹⁻² |¹⁻³

Internally Flawless	Very Very Slightly Included	Very Slightly Included	Slightly Included	Included
------------------------	--------------------------------	---------------------------	----------------------	----------



July 5, 2025

IGI Report Number **LG719533745**Description **LABORATORY GROWN DIAMOND**Shape and Cutting Style **ROUND BRILLIANT**

Measurements 9.15 - 9.24 X 5.74 MM

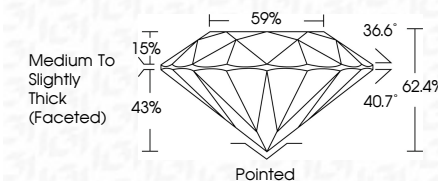
GRADING RESULTS

Carat Weight **3.06 CARATS**

Color Grade D

Clarity Grade VS 2

Cut Grade **EXCELLENT**



ADDITIONAL GRADING INFORMATION

Polish **EXCELLENT**Symmetry **EXCELLENT**Fluorescence **NONE**Inscription(s) LG719533745

Comments: This Laboratory Grown Diamond was created by Chemical Vapor Deposition (CVD) growth process.
Type IIa



© IGI 2020, International Gemological Institute

FD - 10 20

www.igi.org



THIS DOCUMENT WAS PRODUCED WITH THE FOLLOWING SECURITY MEASURES: SPECIAL DOCUMENT PAPER, INK SCREENS, WATERMARK, BACKGROUND DESIGNS, HOLOGRAM AND OTHER SECURITY FEATURES NOT LISTED AND DO EXCEED DOCUMENT SECURITY INDUSTRY GUIDELINE

July 5, 2025	3.06 CARATS	VS 2	Polished	Comments: The Laboratory Grown Diamond was found to be a natural vapor deposition (CVD) growth process. Type IIA
GI Report No. G271933745	D	EXCELLENT	EXCELLENT	
ROUND BRILLIANT		62.4%	EXCELLENT	
		59%	NOISE	
		Medium to Slightly Thick (Faceted)	161 G271933745	
	3.06 CARATS	VS 2	Polished	
		EXCELLENT	EXCELLENT	
		62.4%	EXCELLENT	
		59%	NOISE	
		Medium to Slightly Thick (Faceted)	161 G271933745	