



ELECTRONIC COPY

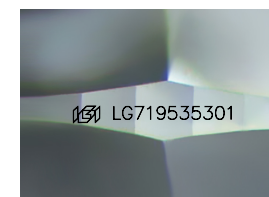
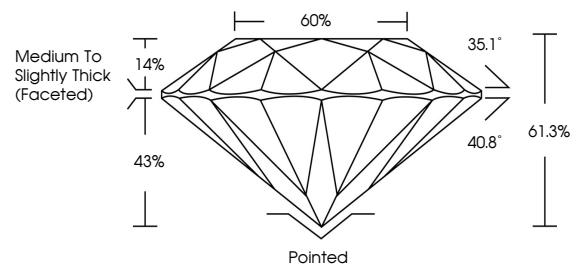
LG719535301
Report verification at igi.org



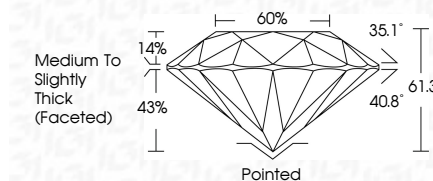
July 1, 2025
IGI Report Number LG719535301
Description LABORATORY GROWN DIAMOND
Shape and Cutting Style ROUND BRILLIANT
Measurements 10.09 - 10.16 X 6.21 MM
GRADING RESULTS
Carat Weight 4.00 CARATS
Color Grade E
Clarity Grade VVS 2
Cut Grade EXCELLENT

July 1, 2025
IGI Report Number LG719535301
Description LABORATORY GROWN DIAMOND
Shape and Cutting Style ROUND BRILLIANT
Measurements 10.09 - 10.16 X 6.21 MM
GRADING RESULTS
Carat Weight 4.00 CARATS
Color Grade E
Clarity Grade VVS 2
Cut Grade EXCELLENT

PROPORTIONS



Sample Image Used



ADDITIONAL GRADING INFORMATION
Polish EXCELLENT
Symmetry EXCELLENT
Fluorescence NONE
Inscription(s) LG719535301

Comments: This Laboratory Grown Diamond was created by Chemical Vapor Deposition (CVD) growth process. Type IIa

COLOR

D E F G H I J Faint Very Light Light

CLARITY

IF WS 1-2 VS 1-2 SI 1-2 I 1-3
Internally Flawless Very Very Slightly Included Very Slightly Included Slightly Included Included

ADDITIONAL GRADING INFORMATION

Polish EXCELLENT
Symmetry EXCELLENT
Fluorescence NONE
Inscription(s) LG719535301
Comments: This Laboratory Grown Diamond was created by Chemical Vapor Deposition (CVD) growth process. Type IIa



July 1, 2025
IGI Report No LG719535301
ROUND BRILLIANT
4.00 CARATS E
10.09 - 10.16 X 6.21 MM
Carat Weight 4.00 CARATS
Color Grade E
Clarity Grade VVS 2
Depth 61.3%
Table 60%
Girdle Medium To Slightly Thick (Faceted)
Culet Pointed
Polish EXCELLENT
Symmetry EXCELLENT
Fluorescence NONE
Inscription(s) LG719535301
Comments: This Laboratory Grown Diamond was created by Chemical Vapor Deposition (CVD) growth process. Type IIa