

**ELECTRONIC COPY**

## LABORATORY GROWN DIAMOND REPORT

July 3, 2025	
IGI Report Number	LG719551001
Description	LABORATORY GROWN DIAMOND
Shape and Cutting Style	ROUND BRILLIANT
Measurements	6.61 - 6.64 X 4.07 MM

## GRADING RESULTS

Carat Weight	1.11 CARAT
Color Grade	D
Clarity Grade	VVS 1
Cut Grade	IDEAL

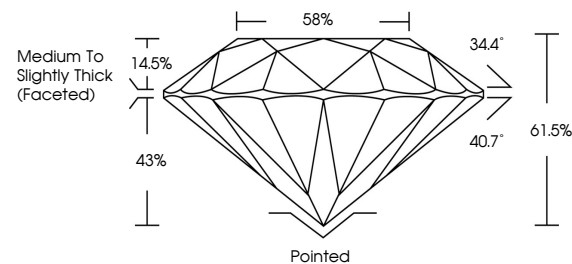
### ADDITIONAL GRADING INFORMATION

Polish	EXCELLENT
Symmetry	EXCELLENT
Fluorescence	NONE
Inscription(s)	 LG719551001

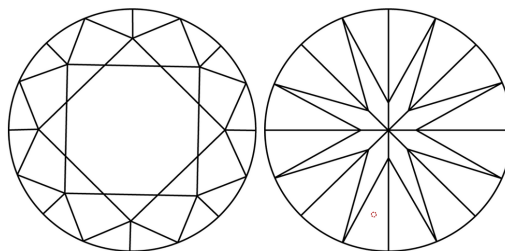
Comments: As Grown - No indication of post-growth treatment.  
This Laboratory Grown Diamond was created by High Pressure High Temperature (HPHT) growth process.  
Type II

LG719551001  
Report verification at [igi.org](http://igi.org)

## PROPORTIONS

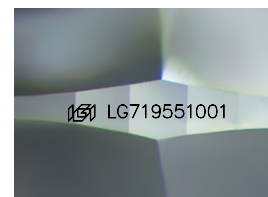


## CLARITY CHARACTERISTICS



## KEY TO SYMBOLS

Red symbols indicate internal characteristics.  
Green symbols indicate external characteristics.



Sample Image Used

## COLOR

D E F G H I J Faint Very Light Light

## CLARITY

IF                      WS<sup>1-2</sup>                      VS<sup>1-2</sup>                      SI<sup>1-2</sup>                      I<sup>1-3</sup>

Internally Flawless	Very Very Slightly Included	Very Slightly Included	Slightly Included	Included
------------------------	--------------------------------	---------------------------	----------------------	----------

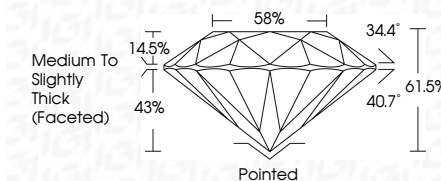
## LABORATORY GROWN DIAMOND REPORT



July 3, 2025	
IGI Report Number	LG719551001
Description	LABORATORY GROWN DIAMOND
Shape and Cutting Style	ROUND BRILLIANT
Measurements	6.61 - 6.64 X 4.07 MM

## GRADING RESULTS

Carat Weight	1.11 CARAT
Color Grade	D
Clarity Grade	VVS 1
Cut Grade	IDEAL



### ADDITIONAL GRADING INFORMATION

Polish	EXCELLENT
Symmetry	EXCELLENT
Fluorescence	NONE
Inscription(s)	 LG719551001
Comments: As Grown - No indication of post-growth treatment.	
This Laboratory Grown Diamond was created by High Pressure High Temperature (HPHT) growth process.	
Type II	



© IGI 2020, International Gemological Institute

FD - 10 20

July 3, 2025	Report No. I6719651001	
ROUND BRILLIANT		
6.61 - 6.64 X 4.07 MM		
Color Weight		
Color Grade		
D		
	VVS 1	
	IDEAL	
	61.5%	
	58%	
	Medium to Slightly Thick (faceted)	
	Pointed	
	EXCELLENT	
	EXCELLENT	
	NONE	
	I6719651001	
Comments:		
As Grown - No indication of post-growth treatment.		
Secondary Growth Diamond was created by High Pressure High Temperature (HPHT) growth process.		