



ELECTRONIC COPY

LG719551423
Report verification at igi.org



July 2, 2025
IGI Report Number **LG719551423**
Description **LABORATORY GROWN DIAMOND**
Shape and Cutting Style **ROUND BRILLIANT**
Measurements **12.77 - 12.82 X 7.75 MM**
GRADING RESULTS
Carat Weight **7.72 CARATS**
Color Grade **F**
Clarity Grade **VVS 2**
Cut Grade **IDEAL**

July 2, 2025
IGI Report Number **LG719551423**
Description **LABORATORY GROWN DIAMOND**
Shape and Cutting Style **ROUND BRILLIANT**
Measurements **12.77 - 12.82 X 7.75 MM**

GRADING RESULTS

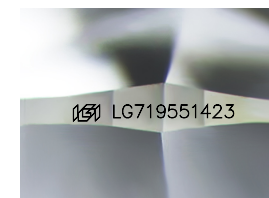
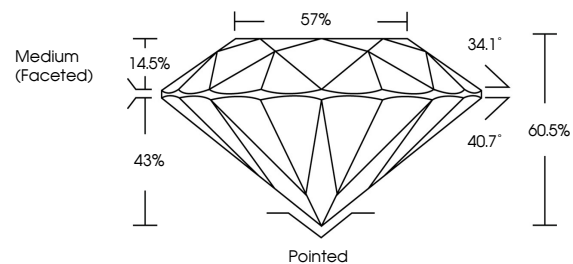
Carat Weight **7.72 CARATS**
Color Grade **F**
Clarity Grade **VVS 2**
Cut Grade **IDEAL**

ADDITIONAL GRADING INFORMATION

Polish **EXCELLENT**
Symmetry **EXCELLENT**
Fluorescence **NONE**
Inscription(s) **LG719551423**

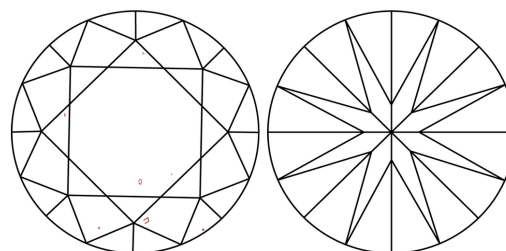
Comments: HEARTS & ARROWS
This Laboratory Grown Diamond was created by
Chemical Vapor Deposition (CVD) growth process.
Type IIa

PROPORTIONS



Sample Image Used

CLARITY CHARACTERISTICS



KEY TO SYMBOLS

Red symbols indicate internal characteristics.
Green symbols indicate external characteristics.



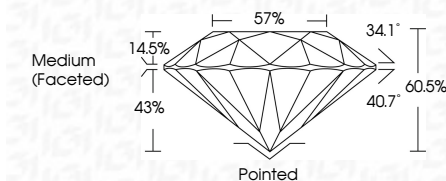
COLOR

D E F G H I J Faint Very Light Light

CLARITY

IF VS¹⁻² VS¹⁻² SI¹⁻² I¹⁻³

Internally Flawless Very Very Slightly Included Very Slightly Included Slightly Included Included



ADDITIONAL GRADING INFORMATION

Polish **EXCELLENT**
Symmetry **EXCELLENT**
Fluorescence **NONE**
Inscription(s) **LG719551423**
Comments: HEARTS & ARROWS
This Laboratory Grown Diamond was created by
Chemical Vapor Deposition (CVD) growth process.
Type IIa



July 2, 2025	IGI Report No LG719551423	ROUND BRILLIANT	12.77 - 12.82 X 7.75 MM	7.72 CARATS	F	VVS 2	IDEAL	60.5%	57%	Medium (Faceted)	Pointed	EXCELLENT	EXCELLENT	NONE	LG719551423
IGI	Carat Weight	Color Grade	Clarity Grade	Cut Grade	Depth	Table	Girdle	Polish	Symmetry	Fluorescence	Inscriptions(s)	Comments: Hearts & Arrows This Laboratory Grown Diamond was created by Chemical Vapor Deposition (CVD) growth process. Type IIa			