



ELECTRONIC COPY

LABORATORY GROWN DIAMOND REPORT

July 2, 2025	
IGI Report Number	LG719557112
Description	LABORATORY GROWN DIAMOND
Shape and Cutting Style	ROUND BRILLIANT
Measurements	7.70 - 7.77 X 4.76 MM

GRADING RESULTS

Carat Weight	1.77 CARAT
Color Grade	F
Clarity Grade	INTERNALLY FLAWLESS
Cut Grade	IDEAL

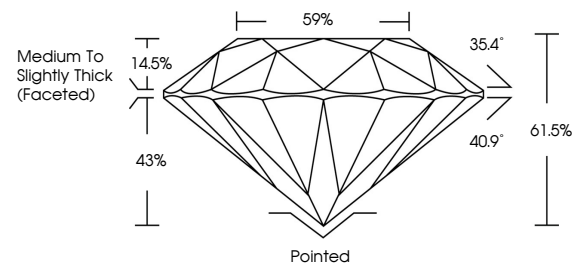
ADDITIONAL GRADING INFORMATION

Polish	EXCELLENT
Symmetry	EXCELLENT
Fluorescence	NONE
Inscription(s)	 LG719557112

Comments: As Grown - No indication of post-growth treatment.
This Laboratory Grown Diamond was created by High Pressure High Temperature (HPHT) growth process.
Type II

LG719557112
Report verification at igi.org

PROPORTIONS

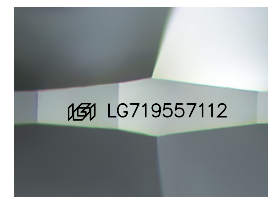


CLARITY CHARACTERISTICS



KEY TO SYMBOLS

Red symbols indicate internal characteristics.
Green symbols indicate external characteristics.



Sample Image Used

COLOR

D E F G H I J Faint Very Light Light

CLARITY

IF WS¹⁻² VS¹⁻² SI¹⁻² I¹⁻³

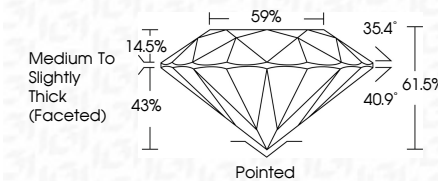
Internally Flawless	Very Very Slightly Included	Very Slightly Included	Slightly Included	Included
------------------------	--------------------------------	---------------------------	----------------------	----------



July 2, 2025	
IGI Report Number	LG719557112
Description	LABORATORY GROWN DIAMOND
Shape and Cutting Style	ROUND BRILLIANT
Measurements	7.70 - 7.77 X 4.76 MM

GRADING RESULTS

Carat Weight	1.77 CARAT
Color Grade	F
Clarity Grade	INTERNALLY FLAWLESS
Cut Grade	IDEAL



ADDITIONAL GRADING INFORMATION

Polish	EXCELLENT
Symmetry	EXCELLENT
Fluorescence	NONE
Inscription(s)	 LG719557112
Comments: As Grown - No indication of post-growth treatment.	
This Laboratory Grown Diamond was created by High Pressure High Temperature (HPHT) growth process.	
Type II	



© IGI 2020, International Gemological Institute

FD - 10 20



THIS DOCUMENT WAS PRODUCED WITH THE FOLLOWING SECURITY MEASURES: SPECIAL DOCUMENT PAPER, INK SCREENS, WATERMARK, BACKGROUND DESIGNS, HOLOGRAM AND OTHER SECURITY FEATURES NOT LISTED AND DO EXCEED DOCUMENT SECURITY INDUSTRY GUIDELINES

www.igi.org

JUN 2, 2025		IGI Report No. G971955712	
ROUND BRILLIANT		1.77 CARAT	
1.70 - 1.77 X 4.76 MM		F	
Carat Weight	Color Grade	Clarity Grade	LF
			IDEAL
			61.5%
			59%
			Medium to slightly thick faceted
			Pointed
			EXCELLENT
			EXCELLENT
			NONE
			G971955712

Comments: As Grown - No indication of post-growth treatment.
The Laboratory Grown Diamond was created by High Pressure High Temperature (HPHT) growth process.
None