



ELECTRONIC COPY

LG719562686
Report verification at igi.org



July 31, 2025
IGI Report Number **LG719562686**
Description **LABORATORY GROWN DIAMOND**
Shape and Cutting Style **SQUARE CUSHION MODIFIED BRILLIANT**
Measurements **7.35 X 7.11 X 4.89 MM**
GRADING RESULTS
Carat Weight **2.01 CARATS**
Color Grade **E**
Clarity Grade **VS 1**

LABORATORY GROWN DIAMOND REPORT

July 31, 2025
IGI Report Number **LG719562686**
Description **LABORATORY GROWN DIAMOND**
Shape and Cutting Style **SQUARE CUSHION MODIFIED BRILLIANT**
Measurements **7.35 X 7.11 X 4.89 MM**

GRADING RESULTS

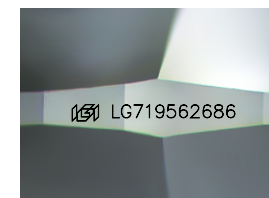
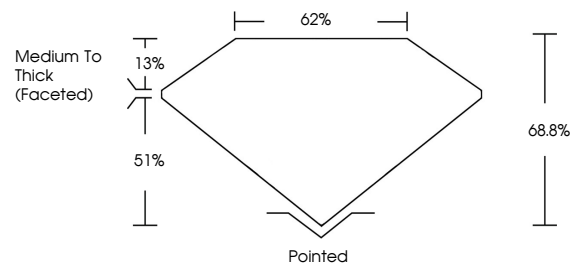
Carat Weight **2.01 CARATS**
Color Grade **E**
Clarity Grade **VS 1**

ADDITIONAL GRADING INFORMATION

Polish **EXCELLENT**
Symmetry **EXCELLENT**
Fluorescence **NONE**
Inscription(s) **IGI LG719562686**

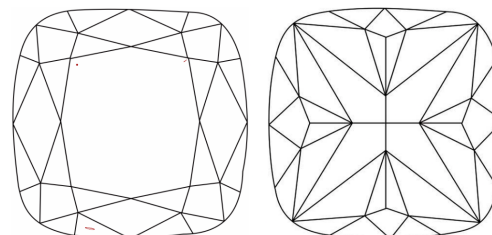
Comments: This Laboratory Grown Diamond was created by Chemical Vapor Deposition (CVD) growth process.
Type IIa

PROPORTIONS



Sample Image Used

CLARITY CHARACTERISTICS



KEY TO SYMBOLS

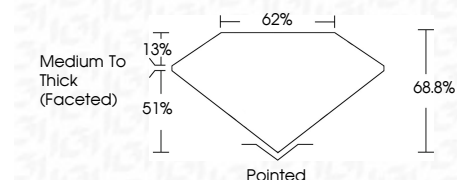
Red symbols indicate internal characteristics.
Green symbols indicate external characteristics.

COLOR

D E F G H I J Faint Very Light Light

CLARITY

IF	WS ¹⁻²	VS ¹⁻²	SI ¹⁻²	I ¹⁻³
Internally Flawless	Very Very Slightly Included	Very Slightly Included	Slightly Included	Included



ADDITIONAL GRADING INFORMATION

Polish **EXCELLENT**
Symmetry **EXCELLENT**
Fluorescence **NONE**
Inscription(s) **IGI LG719562686**
Comments: This Laboratory Grown Diamond was created by Chemical Vapor Deposition (CVD) growth process.
Type IIa



July 31, 2025
IGI Report No **LG719562686**
SQUARE CUSHION MODIFIED BRILLIANT
7.35 X 7.11 X 4.89 MM
2.01 CARATS
E
VS 1
68.8%
62%
Medium To Thick (Faceted)
Pointed
EXCELLENT
EXCELLENT
NONE
IGI LG719562686
Comments: This Laboratory Grown Diamond was created by Chemical Vapor Deposition (CVD) growth process.
Type IIa