

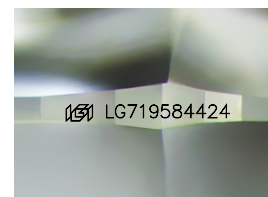
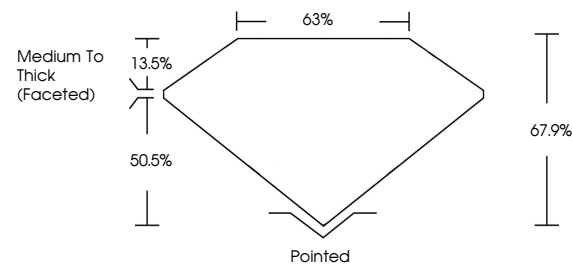


**ELECTRONIC COPY**

## LABORATORY GROWN DIAMOND REPORT

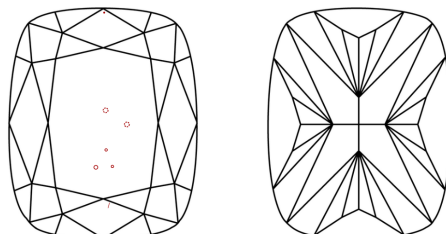
LG719584424  
Report verification at [igi.org](https://igi.org)

## PROPORTIONS



Sample Image Used

## CLARITY CHARACTERISTICS



## KEY TO SYMBOLS

Red symbols indicate internal characteristics.  
Green symbols indicate external characteristics.

## COLOR

D E F G H I J Faint Very Light Light

## CLARITY

IF      VWS<sup>1-2</sup>      VS<sup>1-2</sup>      SI<sup>1-2</sup>      I<sup>1-3</sup>

Internally Flawless	Very Very Slightly Included	Very Slightly Included	Slightly Included	Included
------------------------	--------------------------------	---------------------------	----------------------	----------

## LABORATORY GROWN DIAMOND REPORT



July 5, 2025

IGI Report Number **LG719584424**

Description	LABORATORY GROWN DIAMOND
-------------	--------------------------

Shape and Cutting Style **CUSHION MODIFIED  
BRILLIANT**

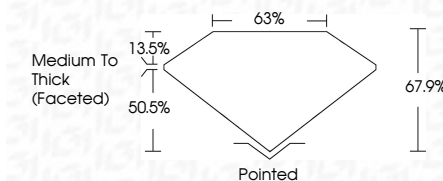
Measurements **12.93 X 9.26 X 6.29 MM**

## GRADING RESULTS

Carat Weight **6.02 CARATS**

Color Grade **G**

Clarity Grade VS 2



### ADDITIONAL GRADING INFORMATION

Polish **EXCELLENT**Symmetry **EXCELLENT**Fluorescence **NONE**Inscription(s)  LG719584424

Comments: This Laboratory Grown Diamond was created by Chemical Vapor Deposition (CVD) growth process.  
Type IIa



© IGI 2020, International Gemological Institute

FD - 10 20



THIS DOCUMENT WAS PRODUCED WITH THE FOLLOWING SECURITY MEASURES: SPECIAL DOCUMENT PAPER, INK SCREENS, WATERMARK, BACKGROUND DESIGNS, HOLOGRAM AND OTHER SECURITY FEATURES NOT LISTED AND DO EXCEED DOCUMENT SECURITY INDUSTRY GUIDELINES

July 5, 2025  
 IGI Report No.  
 DISCUSSION MON

12.93 X 9.26 X 6.29 MM	6.02 CARATS
Carat Weight	G
Color Grade	Vs 2
Clarity Grade	67.9%
Depth	65%
Table	Medium to Thick (faceted)
Girdle	Pointed
Quiet	EXCELLENT
Polish	EXCELLENT
Symmetry	NONE
Fluorescence	see certificate for details

**Comments:**  
This Laboratory Grown Diamond was  
created by Chemical Vapor Deposition  
(CVD) growth process.

**www.igi.org**