



ELECTRONIC COPY

LG720514958
Report verification at igi.org



July 10, 2025
IGI Report Number **LG720514958**
Description **LABORATORY GROWN DIAMOND**
Shape and Cutting Style **CUT CORNERED
RECTANGULAR MODIFIED
BRILLIANT**
Measurements **17.41 X 12.61 X 7.88 MM**
GRADING RESULTS
Carat Weight **15.46 CARATS**
Color Grade **F**
Clarity Grade **VS 1**

July 10, 2025
IGI Report Number **LG720514958**
Description **LABORATORY GROWN DIAMOND**
Shape and Cutting Style **CUT CORNERED RECTANGULAR
MODIFIED BRILLIANT**
Measurements **17.41 X 12.61 X 7.88 MM**

GRADING RESULTS

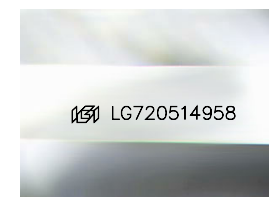
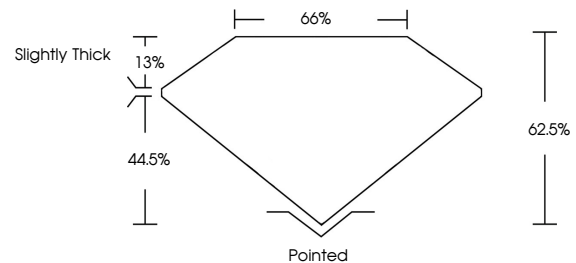
Carat Weight **15.46 CARATS**
Color Grade **F**
Clarity Grade **VS 1**

ADDITIONAL GRADING INFORMATION

Polish **EXCELLENT**
Symmetry **EXCELLENT**
Fluorescence **NONE**
Inscription(s) **IGI LG720514958**

Comments: This Laboratory Grown Diamond was created by Chemical Vapor Deposition (CVD) growth process.
Type IIa

PROPORTIONS



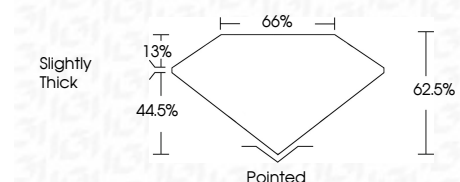
Sample Image Used

COLOR

D E F G H I J Faint Very Light Light

CLARITY

IF	VS ¹⁻²	VS ¹⁻²	SI ¹⁻²	I ¹⁻³
Internally Flawless	Very Very Slightly Included	Very Slightly Included	Slightly Included	Included



ADDITIONAL GRADING INFORMATION

Polish **EXCELLENT**
Symmetry **EXCELLENT**
Fluorescence **NONE**
Inscription(s) **IGI LG720514958**
Comments: This Laboratory Grown Diamond was created by Chemical Vapor Deposition (CVD) growth process.
Type IIa



IGI



July 10, 2025
IGI Report No LG720514958
CUT CORNERED RECT. MODIFIED BRILLIANT
17.41 X 12.61 X 7.88 MM
15.46 CARATS
F
VS 1
62.5%
65%
Slightly Thick
Pointed
EXCELLENT
EXCELLENT
NONE
IGI LG720514958
Comments: This Laboratory Grown Diamond was created by Chemical Vapor Deposition (CVD) growth process.
Type IIa