



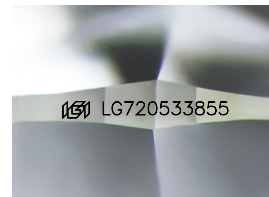
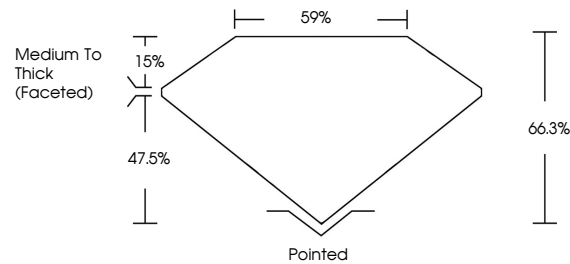
**INTERNATIONAL
GEMOLOGICAL
INSTITUTE**

ELECTRONIC COPY

LABORATORY GROWN DIAMOND REPORT

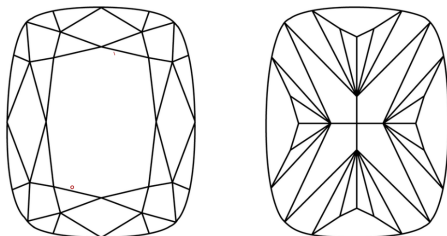
LG720533855
Report verification at igi.org

PROPORTIONS



Sample Image Used

CLARITY CHARACTERISTICS



KEY TO SYMBOLS

Red symbols indicate internal characteristics.
Green symbols indicate external characteristics.

COLOR

D E F G H I J Faint Very Light Light

CLARITY

IF	WS ¹⁻²	VS ¹⁻²	SI ¹⁻²	I ¹⁻³
----	-------------------	-------------------	-------------------	------------------

Internally Flawless	Very Very Slightly Included	Very Slightly Included	Slightly Included	Included
------------------------	--------------------------------	---------------------------	----------------------	----------



© IGI 2020, International Gemological Institute

FD - 10 20

www.igi.org

THIS DOCUMENT WAS PRODUCED WITH THE FOLLOWING SECURITY MEASURES: SPECIAL DOCUMENT PAPER, INK SCREENS, WATERMARK, BACKGROUND NOISE, LINK DATA, AND OTHER SECURITY FEATURES NOT LISTED. AND DO NOT DISSEMINATE OR REPRODUCE ANY INFORMATION FROM THIS DOCUMENT.

LABORATORY GROWN DIAMOND REPORT



July 8, 2025

IGI Report Number **LG720533855**

Description	LABORATORY GROWN DIAMOND
-------------	--------------------------

Shape and Cutting Style **CUSHION MODIFIED
BRILLIANT**

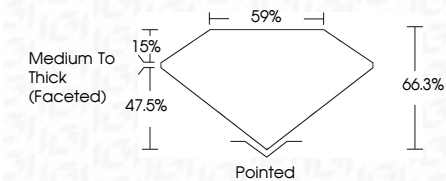
Measurements 11.21 X 8.13 X 5.39 MM

GRADING RESULTS

Carat Weight **3.87 CARATS**

Color Grade **G**

Clarity Grade VS 1



ADDITIONAL GRADING INFORMATION

Polish **EXCELLENT**Symmetry **EXCELLENT**Fluorescence **NONE**Inscription(s)  LG72053385

Comments: This Laboratory Grown Diamond was created by Chemical Vapor Deposition (CVD) growth process.
Type IIa



IG

July 8, 2025	GI Report No LG72053865	CUSHION MODIFIED BRILLIANT	3.87 CARATS	
	11.21 X 8.13 X 5.39 MM			
	Carat Weight			
	Color Grade			
	Clarity Grade			
	Depth		VS 1	
	Table		66.3%	
	Girdle		65%	
			Medium to Thick	
			(faceted)	
	Polish		Polished	
	Symmetry		EXCELLENT	
	Fluorescence		EXCELLENT	
	Annotations(3)		NONE	
				1691 LG72053865
	Comments:			
	This Laboratory Grown Diamond was			
	created by Chemical Vapor Deposition			
	(CVD) growth process.			
	Type IIa			