

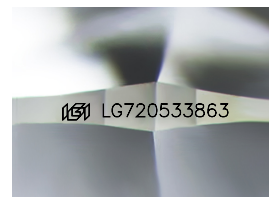
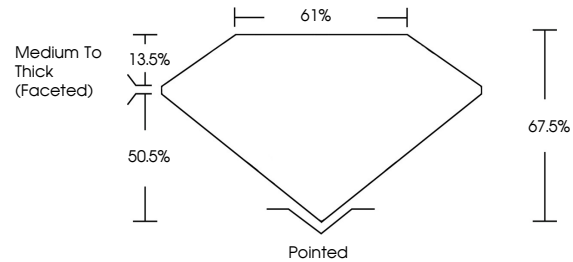


**INTERNATIONAL
GEMOLOGICAL
INSTITUTE**

ELECTRONIC COPY

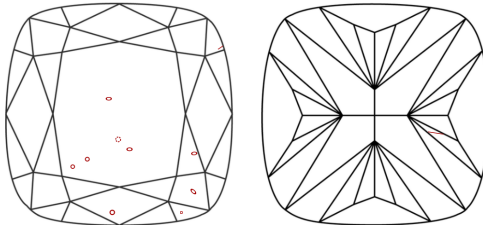
LG720533863
Report verification at igi.org

PROPORTIONS



Sample Image Used

CLARITY CHARACTERISTICS



KEY TO SYMBOLS

Red symbols indicate internal characteristics.
Green symbols indicate external characteristics.

COLOR

D E F G H I J Faint Very Light Light

CLARITY

IF WS¹⁻² VS¹⁻² SI¹⁻² I¹⁻³

Internally Flawless	Very Very Slightly Included	Very Slightly Included	Slightly Included	Included
------------------------	--------------------------------	---------------------------	----------------------	----------



© IGI 2020, International Gemological Institute

FD - 10 20

www.igi.org

THIS DOCUMENT WAS PRODUCED WITH THE FOLLOWING SECURITY MEASURES: SPECIAL DOCUMENT PAPER, INK SCREENS, WATERMARK, BACKGROUND DESIGNS, HOLOGRAM AND OTHER SECURITY FEATURES NOT LISTED AND DO EXCEED DOCUMENT SECURITY INDUSTRY GUIDELINES

LABORATORY GROWN DIAMOND REPORT



July 5, 2025

IGI Report Number **LG720533863**

Description	LABORATORY GROWN DIAMOND
-------------	--------------------------

Shape and Cutting Style **SQUARE CUSHION MODIFIED
BRILLIANT**

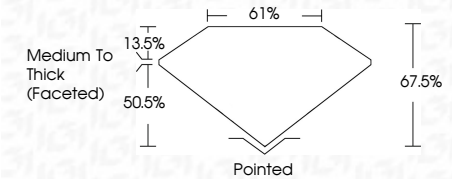
Measurements 9.13 X 9.09 X 6.14 MM

GRADING RESULTS

Carat Weight **4.03 CARATS**

Color Grade	G
-------------	---

Clarity Grade	SI 1
---------------	------



ADDITIONAL GRADING INFORMATION

Polish **EXCELLENT**Symmetry **EXCELLENT**Fluorescence **NONE**Inscription(s) LG72053386

Comments: This Laboratory Grown Diamond was created by Chemical Vapor Deposition (CVD) growth process.
Type IIa



IGI

JULY 5, 2025	IGI Report No. LG72033863	4.03 CARATS	S I 1	67.0%	61%	Pointed	EXCELLENT	EXCELLENT	NONE	(g) LG72033863
9.13 X 9.09 X .61 MM	SQUARE CUSHION MODIFIED BRILLIANT	G	Carat Weight	Color Grade	Medium to Thick (included)	Excellent	Excellent	None	None	(g) LG72033863
Carat Weight	9.13 X 9.09 X .61 MM	G	Color Grade	Clarity Grade	Depth	Table	Girdle	Culet	Polish	Symmetry
Fluorescence	None	None	Inscription(s)	None	Excellent	Excellent	None	None	None	None

Comments:
This Laboratory Grown Diamond was created by Chemical Vapor Deposition (CVD) growth process.
Type IIa