



ELECTRONIC COPY

LG720546227 Report verification at igi.org



August 12, 2025 IGI Report Number LG720546227 Description LABORATORY GROWN DIAMOND Shape and Cutting Style SQUARE CUSHION MODIFIED BRILLIANT Measurements 5.76 X 5.23 X 3.74 MM GRADING RESULTS Carat Weight 1.09 CARAT Color Grade FANCY VIVID GREEN Clarity Grade VVS 2

LABORATORY GROWN DIAMOND REPORT

August 12, 2025 IGI Report Number LG720546227 Description LABORATORY GROWN DIAMOND Shape and Cutting Style SQUARE CUSHION MODIFIED BRILLIANT Measurements 5.76 X 5.23 X 3.74 MM

GRADING RESULTS

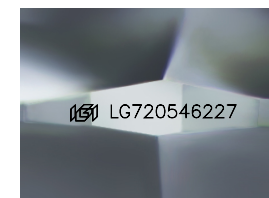
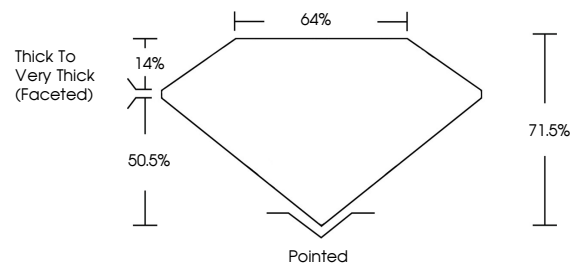
Carat Weight 1.09 CARAT Color Grade FANCY VIVID GREEN Clarity Grade VVS 2

ADDITIONAL GRADING INFORMATION

Polish VERY GOOD Symmetry VERY GOOD Fluorescence NONE Inscription(s) LG720546227

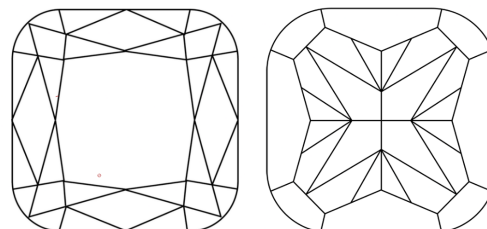
Comments: This Laboratory Grown Diamond was created by High Pressure High Temperature (HPHT) growth process. Indications of post-growth treatment.

PROPORTIONS



Sample Image Used

CLARITY CHARACTERISTICS



KEY TO SYMBOLS

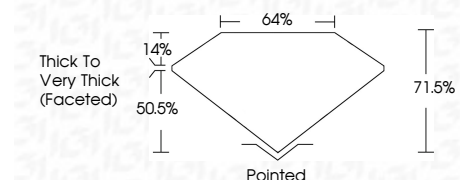
Red symbols indicate internal characteristics. Green symbols indicate external characteristics.

COLOR

D E F G H I J Faint Very Light Light

CLARITY

IF VS 1-2 VS 1-2 SI 1-2 I 1-3 Internally Flawless Very Very Slightly Included Very Slightly Included Slightly Included Included



ADDITIONAL GRADING INFORMATION

Polish VERY GOOD Symmetry VERY GOOD Fluorescence NONE Inscription(s) LG720546227 Comments: This Laboratory Grown Diamond was created by High Pressure High Temperature (HPHT) growth process. Indications of post-growth treatment.



August 12, 2025 IGI Report No LG720546227 SQUARE CUSHION MODIFIED BRILLIANT 1.09 CARAT FANCY VIVID GREEN VVS 2 5.76 X 5.23 X 3.74 MM 71.05% 64% Thick to Very Thick (Faceted) Pointed VERY GOOD VERY GOOD NONE NONE LG720546227 Comments: This Laboratory Grown Diamond was created by High Pressure High Temperature (HPHT) growth process. Indications of post-growth treatment.