



**ELECTRONIC COPY**

LG720550270  
Report verification at igi.org



July 7, 2025  
IGI Report Number **LG720550270**  
Description **LABORATORY GROWN DIAMOND**  
Shape and Cutting Style **CUT CORNERED  
RECTANGULAR MODIFIED  
BRILLIANT**  
Measurements **13.26 X 9.45 X 6.53 MM**  
**GRADING RESULTS**  
Carat Weight **7.11 CARATS**  
Color Grade **G**  
Clarity Grade **VS 2**

**LABORATORY GROWN DIAMOND REPORT**

July 7, 2025  
IGI Report Number **LG720550270**  
Description **LABORATORY GROWN DIAMOND**  
Shape and Cutting Style **CUT CORNERED RECTANGULAR  
MODIFIED BRILLIANT**  
Measurements **13.26 X 9.45 X 6.53 MM**

**GRADING RESULTS**

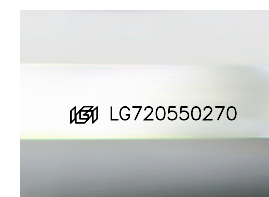
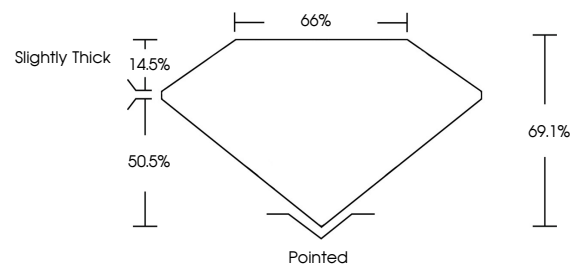
Carat Weight **7.11 CARATS**  
Color Grade **G**  
Clarity Grade **VS 2**

**ADDITIONAL GRADING INFORMATION**

Polish **EXCELLENT**  
Symmetry **EXCELLENT**  
Fluorescence **NONE**  
Inscription(s) **IGI LG720550270**

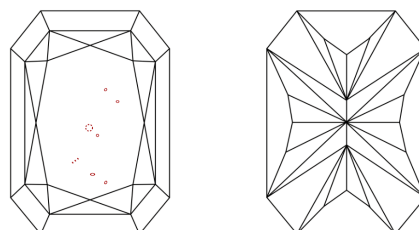
Comments: This Laboratory Grown Diamond was created by Chemical Vapor Deposition (CVD) growth process.  
Type IIa

**PROPORTIONS**



Sample Image Used

**CLARITY CHARACTERISTICS**



**KEY TO SYMBOLS**

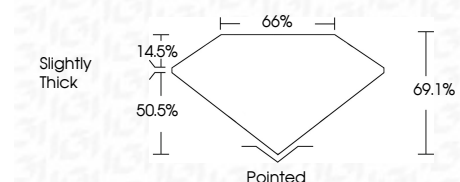
Red symbols indicate internal characteristics.  
Green symbols indicate external characteristics.

**COLOR**

D E F G H I J Faint Very Light Light

**CLARITY**

IF	VS <sup>1-2</sup>	VS <sup>1-2</sup>	SI <sup>1-2</sup>	I <sup>1-3</sup>
Internally Flawless	Very Very Slightly Included	Very Slightly Included	Slightly Included	Included



**ADDITIONAL GRADING INFORMATION**

Polish **EXCELLENT**  
Symmetry **EXCELLENT**  
Fluorescence **NONE**  
Inscription(s) **IGI LG720550270**  
Comments: This Laboratory Grown Diamond was created by Chemical Vapor Deposition (CVD) growth process.  
Type IIa



July 7, 2025  
IGI Report No LG720550270  
CUT CORNERED RECT. MODIFIED BRILLIANT  
13.26 X 9.45 X 6.53 MM  
Carat Weight 7.11 CARATS  
Color Grade G  
Clarity Grade VS 2  
Table 69.1%  
Depth 50.5%  
Girdle Slightly Thick  
Culet Pointed  
Polish EXCELLENT  
Symmetry EXCELLENT  
Fluorescence NONE  
Inscription(s) IGI LG720550270  
Comments: This Laboratory Grown Diamond was created by Chemical Vapor Deposition (CVD) growth process.  
Type IIa