



**ELECTRONIC COPY**

LG720550477  
Report verification at igi.org



July 5, 2025  
IGI Report Number **LG720550477**  
Description **LABORATORY GROWN DIAMOND**  
Shape and Cutting Style **ROUND BRILLIANT**  
Measurements **12.33 - 12.37 X 7.61 MM**  
**GRADING RESULTS**  
Carat Weight **7.10 CARATS**  
Color Grade **G**  
Clarity Grade **VS 1**  
Cut Grade **IDEAL**

July 5, 2025  
IGI Report Number **LG720550477**  
Description **LABORATORY GROWN DIAMOND**  
Shape and Cutting Style **ROUND BRILLIANT**  
Measurements **12.33 - 12.37 X 7.61 MM**

**GRADING RESULTS**

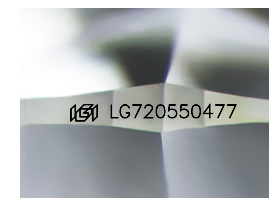
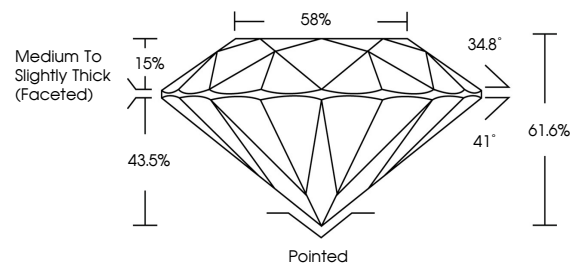
Carat Weight **7.10 CARATS**  
Color Grade **G**  
Clarity Grade **VS 1**  
Cut Grade **IDEAL**

**ADDITIONAL GRADING INFORMATION**

Polish **EXCELLENT**  
Symmetry **EXCELLENT**  
Fluorescence **NONE**  
Inscription(s) **IGI LG720550477**

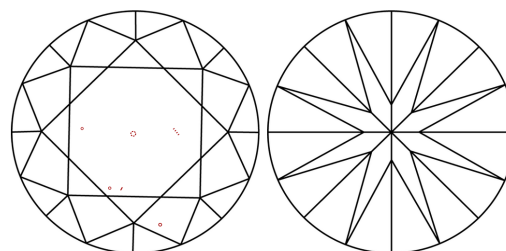
Comments: HEARTS & ARROWS  
This Laboratory Grown Diamond was created by  
Chemical Vapor Deposition (CVD) growth process.  
Type IIa

**PROPORTIONS**



Sample Image Used

**CLARITY CHARACTERISTICS**



**KEY TO SYMBOLS**

Red symbols indicate internal characteristics.  
Green symbols indicate external characteristics.

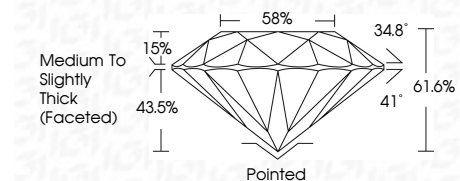


**COLOR**

D E F G H I J Faint Very Light Light

**CLARITY**

IF	VS <sup>1-2</sup>	VS <sup>1-2</sup>	SI <sup>1-2</sup>	I <sup>1-3</sup>
Internally Flawless	Very Very Slightly Included	Very Slightly Included	Slightly Included	Included



**ADDITIONAL GRADING INFORMATION**

Polish **EXCELLENT**  
Symmetry **EXCELLENT**  
Fluorescence **NONE**  
Inscription(s) **IGI LG720550477**  
Comments: HEARTS & ARROWS  
This Laboratory Grown Diamond was created by  
Chemical Vapor Deposition (CVD) growth process.  
Type IIa



July 5, 2025  
IGI Report No **LG720550477**  
**ROUND BRILLIANT**  
12.33 - 12.37 X 7.61 MM  
Carat Weight **7.10 CARATS**  
Color Grade **G**  
Clarity Grade **VS 1**  
Cut Grade **IDEAL**  
Depth **61.6%**  
Table **58%**  
Girdle **Medium To Slightly Thick (Faceted)**  
Culet **Pointed**  
Polish **EXCELLENT**  
Symmetry **EXCELLENT**  
Fluorescence **NONE**  
Inscription(s) **IGI LG720550477**  
Comments: **Hearts & Arrows**  
This Laboratory Grown Diamond was created by **Chemical Vapor Deposition (CVD) growth process.**  
Type **IIa**