

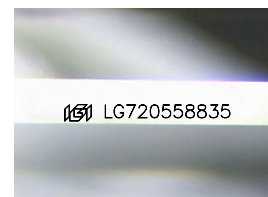
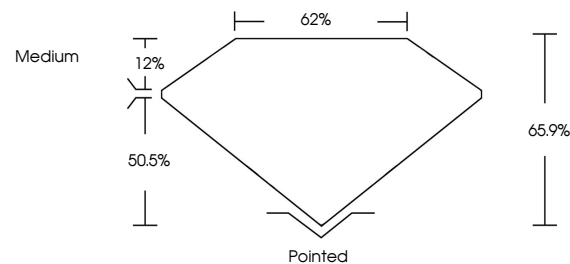


**ELECTRONIC COPY**

## LABORATORY GROWN DIAMOND REPORT

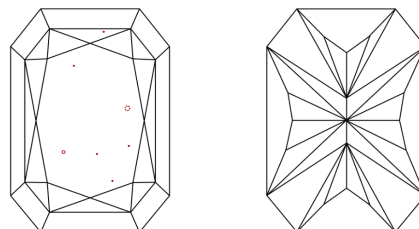
LG720558835  
Report verification at [igi.org](https://igi.org)

## PROPORTIONS



Sample Image Used

## CLARITY CHARACTERISTICS



### KEY TO SYMBOLS

Red symbols indicate internal characteristics.  
Green symbols indicate external characteristics.

## COLOR

D E F G H I J Faint Very Light Light

## CLARITY

IF	VS <sup>1-2</sup>	VS <sup>1-2</sup>	SI <sup>1-2</sup>	I <sup>1-3</sup>
Internally Flawless	Very Very Slightly Included	Very Slightly Included	Slightly Included	Included

## LABORATORY GROWN DIAMOND REPORT



July 8, 2025

IGI Report Number **LG720558835**Description **LABORATORY GROWN DIAMOND**

Shape and Cutting Style

CUT CORNERED  
RECTANGULAR MODIFIED  
BRILLIANT

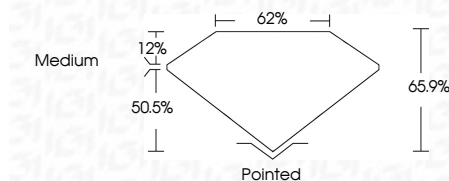
Measurements **12.68 X 8.91 X 5.87 MM**

## GRADING RESULTS

Carat Weight **5.58 CARATS**

Color Grade G

Clarity Grade VS 1



### ADDITIONAL GRADING INFORMATION

Polish **EXCELLENT**Symmetry **EXCELLENT**Fluorescence NONEInscription(s)  LG720558835

Comments: This Laboratory Grown Diamond was created by Chemical Vapor Deposition (CVD) growth process.  
Type IIa



© IGI 2020, International Gemological Institute

FD - 10 20

**www.igi.org**

THIS DOCUMENT WAS PRODUCED WITH THE FOLLOWING SECURITY MEASURES: SPECIAL DOCUMENT PAPER, INK SCREENS, WATERMARK BACKGROUND DESIGNS, HOLOGRAM AND OTHER SECURITY FEATURES NOT LISTED AND DO EXCEED DOCUMENT SECURITY INDUSTRY GUIDELINES

July 4, 2025	GI Report No. LG720558935	Color Grade	VS 1	Medium	Pointed EXCELLENT EXCELLENT NONE NONE
CU CORNEED BEC. MODIFIED BRILLIANT	Carat Weight	65.91			
12.48 X 8.91 X 5.87 MM	Depth	62%			
	Girdle				
	Culet				
Comments:			Type IIa		