



**ELECTRONIC COPY**

## LABORATORY GROWN DIAMOND REPORT

LG720560000  
Report verification at [igi.org](http://igi.org)

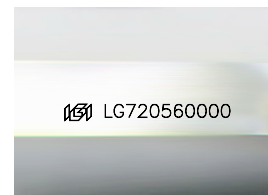
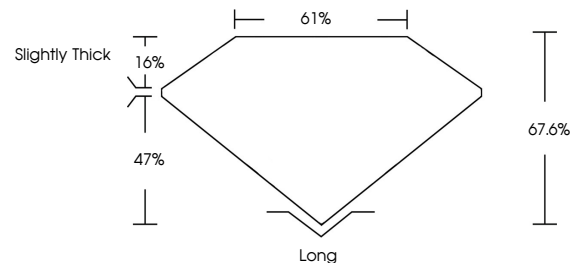
July 8, 2025	
IGI Report Number	LG720560000
Description	LABORATORY GROWN DIAMOND
Shape and Cutting Style	EMERALD CUT
Measurements	7.95 X 5.55 X 3.75 MM
GRADING RESULTS	
Carat Weight	1.70 CARAT
Color Grade	D
Clarity Grade	VVS 1

### ADDITIONAL GRADING INFORMATION

Polish	EXCELLENT
Symmetry	EXCELLENT
Fluorescence	NONE
Inscription(s)	LG720560000

Comments: As Grown - No indication of post-growth treatment.  
This Laboratory Grown Diamond was created by High Pressure High Temperature (HPHT) growth process.  
Type II

## PROPORTIONS



Sample Image Used

## COLOR

D E F G H I J Faint Very Light Light

## CLARITY

IF	VS <sup>1-2</sup>	VS <sup>1-2</sup>	SI <sup>1-2</sup>	I <sup>1-3</sup>
Internally Flawless	Very Very Slightly Included	Very Slightly Included	Slightly Included	Included

## LABORATORY GROWN DIAMOND REPORT



July 8, 2025	
IGI Report Number	LG720560000
Description	LABORATORY GROWN DIAMOND
Shape and Cutting Style	EMERALD CUT
Measurements	7.95 X 5.55 X 3.75 MM
GRADING RESULTS	
Carat Weight	1.70 CARAT
Color Grade	D
Clarity Grade	VVS 1

### ADDITIONAL GRADING INFORMATION

Polish	EXCELLENT
Symmetry	EXCELLENT
Fluorescence	NONE
Inscription(s)	 LG720560000
Comments: As Grown - No indication of post-growth treatment.	
This Laboratory Grown Diamond was created by High Pressure High Temperature (HPHT) growth process.	
Type II	



**www.igi.org**

© IGI 2020, International Gemological Institute

FD - 10 20



THIS DOCUMENT WAS PRODUCED WITH THE FOLLOWING SECURITY MEASURES: SPECIAL DOCUMENT PAPER, INK SCREENS, WATERMARK, BACKGROUND DESIGNS, HOLOGRAM AND OTHER SECURITY FEATURES NOT LISTED AND DO EXCEED DOCUMENT SECURITY INDUSTRY GUIDELINES

July 8, 2025  
GI Report No LG720560000

[GI Report No. 1]

EMERALD CITE  
 LGI Report No LG/20680000

• • • • •

Carat Weight 1.70 CARAT

**D**

Color Grade

Clarity Grade	WS 1
I	
II	
III	
IV	
V	
VI	
VII	
VIII	
IX	
X	
XI	
XII	
XIII	
XIV	
XV	
XVI	
XVII	
XVIII	
XIX	
XX	
XXI	
XXII	
XXIII	
XXIV	
XXV	
XXVI	
XXVII	
XXVIII	
XXIX	
XXX	
XXXI	
XXXII	
XXXIII	
XXXIV	
XXXV	
XXXVI	
XXXVII	
XXXVIII	
XXXIX	
XXXX	
XXXXI	
XXXXII	
XXXXIII	
XXXXIV	
XXXXV	
XXXXVI	
XXXXVII	
XXXXVIII	
XXXXIX	
XXXXX	
XXXXXI	
XXXXXII	
XXXXXIII	
XXXXXIV	
XXXXXV	
XXXXXVI	
XXXXXVII	
XXXXXVIII	
XXXXXIX	
XXXXXX	
XXXXXXI	
XXXXXXII	
XXXXXXIII	
XXXXXXIV	
XXXXXXV	
XXXXXXVI	
XXXXXXVII	
XXXXXXVIII	
XXXXXXIX	
XXXXXXX	
XXXXXXXI	
XXXXXXXII	
XXXXXXXIII	
XXXXXXXIV	
XXXXXXXV	
XXXXXXXVI	
XXXXXXXVII	
XXXXXXXVIII	
XXXXXXXIX	
XXXXXXX	
XXXXXXXI	
XXXXXXXII	
XXXXXXXIII	
XXXXXXXIV	
XXXXXXXV	
XXXXXXXVI	
XXXXXXXVII	
XXXXXXXVIII	
XXXXXXXIX	
XXXXXXX	
XXXXXXXI	
XXXXXXXII	
XXXXXXXIII	
XXXXXXXIV	
XXXXXXXV	
XXXXXXXVI	
XXXXXXXVII	
XXXXXXXVIII	
XXXXXXXIX	
XXXXXXX	
XXXXXXXI	
XXXXXXXII	
XXXXXXXIII	
XXXXXXXIV	
XXXXXXXV	
XXXXXXXVI	
XXXXXXXVII	
XXXXXXXVIII	
XXXXXXXIX	
XXXXXXX	
XXXXXXXI	
XXXXXXXII	
XXXXXXXIII	
XXXXXXXIV	
XXXXXXXV	
XXXXXXXVI	
XXXXXXXVII	
XXXXXXXVIII	
XXXXXXXIX	
XXXXXXX	
XXXXXXXI	
XXXXXXXII	
XXXXXXXIII	
XXXXXXXIV	
XXXXXXXV	
XXXXXXXVI	
XXXXXXXVII	
XXXXXXXVIII	
XXXXXXXIX	
XXXXXXX	
XXXXXXXI	
XXXXXXXII	
XXXXXXXIII	
XXXXXXXIV	
XXXXXXXV	
XXXXXXXVI	
XXXXXXXVII	
XXXXXXXVIII	
XXXXXXXIX	
XXXXXXX	
XXXXXXXI	
XXXXXXXII	
XXXXXXXIII	
XXXXXXXIV	
XXXXXXXV	
XXXXXXXVI	
XXXXXXXVII	
XXXXXXXVIII	
XXXXXXXIX	
XXXXXXX	
XXXXXXXI	
XXXXXXXII	
XXXXXXXIII	
XXXXXXXIV	
XXXXXXXV	
XXXXXXXVI	
XXXXXXXVII	
XXXXXXXVIII	
XXXXXXXIX	
XXXXXXX	
XXXXXXXI	
XXXXXXXII	
XXXXXXXIII	
XXXXXXXIV	
XXXXXXXV	
XXXXXXXVI	
XXXXXXXVII	
XXXXXXXVIII	
XXXXXXXIX	
XXXXXXX	
XXXXXXXI	
XXXXXXXII	
XXXXXXXIII	
XXXXXXXIV	
XXXXXXXV	
XXXXXXXVI	
XXXXXXXVII	
XXXXXXXVIII	
XXXXXXXIX	
XXXXXXX	
XXXXXXXI	
XXXXXXXII	
XXXXXXXIII	
XXXXXXXIV	
XXXXXXXV	
XXXXXXXVI	
XXXXXXXVII	
XXXXXXXVIII	
XXXXXXXIX	
XXXXXXX	
XXXXXXXI	
XXXXXXXII	
XXXXXXXIII	
XXXXXXXIV	
XXXXXXXV	
XXXXXXXVI	
XXXXXXXVII	
XXXXXXXVIII	
XXXXXXXIX	
XXXXXXX	
XXXXXXXI	
XXXXXXXII	
XXXXXXXIII	
XXXXXXXIV	
XXXXXXXV	
XXXXXXXVI	
XXXXXXXVII	
XXXXXXXVIII	
XXXXXXXIX	
XXXXXXX	
XXXXXXXI	
XXXXXXXII	
XXXXXXXIII	
XXXXXXXIV	
XXXXXXXV	
XXXXXXXVI	
XXXXXXXVII	
XXXXXXXVIII	
XXXXXXXIX	
XXXXXXX	
XXXXXXXI	
XXXXXXXII	
XXXXXXXIII	
XXXXXXXIV	
XXXXXXXV	
XXXXXXXVI	
XXXXXXXVII	
XXXXXXXVIII	
XXXXXXXIX	
XXXXXXX	
XXXXXXXI	
XXXXXXXII	
XXXXXXXIII	
XXXXXXXIV	
XXXXXXXV	
XXXXXXXVI	
XXXXXXXVII	
XXXXXXXVIII	
XXXXXXXIX	
XXXXXXX	
XXXXXXXI	
XXXXXXXII	
XXXXXXXIII	
XXXXXXXIV	

Dep III	67.5%
Total	4.1%

Girdle

[illegible]

Symmetry

Fluorescence  
NONE

© 2007 Pearson Education, Inc. All rights reserved.

**As Grown - No Indication of post-growth**

**This Laboratory Grown Diamond was**

temperature (HPHT) growth process.

1990