



**ELECTRONIC COPY**

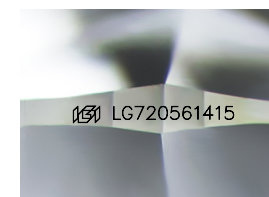
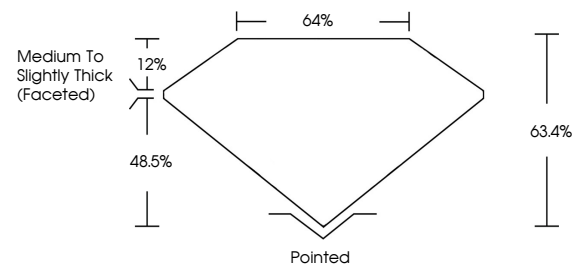
LG720561415  
Report verification at igi.org



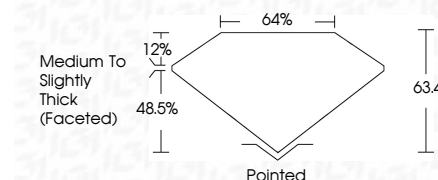
July 14, 2025  
IGI Report Number **LG720561415**  
Description **LABORATORY GROWN DIAMOND**  
Shape and Cutting Style **SQUARE CUSHION MODIFIED BRILLIANT**  
Measurements **8.06 X 7.73 X 4.90 MM**  
**GRADING RESULTS**  
Carat Weight **2.67 CARATS**  
Color Grade **FANCY VIVID GREEN**  
Clarity Grade **VS 1**

July 14, 2025  
IGI Report Number **LG720561415**  
Description **LABORATORY GROWN DIAMOND**  
Shape and Cutting Style **SQUARE CUSHION MODIFIED BRILLIANT**  
Measurements **8.06 X 7.73 X 4.90 MM**  
**GRADING RESULTS**  
Carat Weight **2.67 CARATS**  
Color Grade **FANCY VIVID GREEN**  
Clarity Grade **VS 1**

**PROPORTIONS**



Sample Image Used



**ADDITIONAL GRADING INFORMATION**

Polish **EXCELLENT**  
Symmetry **EXCELLENT**  
Fluorescence **NONE**  
Inscription(s) **IGI LG720561415**

Comments: This Laboratory Grown Diamond was created by Chemical Vapor Deposition (CVD) growth process. Indications of post-growth treatment.

**COLOR**

D E F G H I J Faint Very Light Light

**CLARITY**

IF	WS <sup>1-2</sup>	VS <sup>1-2</sup>	SI <sup>1-2</sup>	I <sup>1-3</sup>
Internally Flawless	Very Very Slightly Included	Very Slightly Included	Slightly Included	Included

**ADDITIONAL GRADING INFORMATION**

Polish **EXCELLENT**  
Symmetry **EXCELLENT**  
Fluorescence **NONE**  
Inscription(s) **IGI LG720561415**  
Comments: This Laboratory Grown Diamond was created by Chemical Vapor Deposition (CVD) growth process. Indications of post-growth treatment.



July 14, 2025  
IGI Report No **LG720561415**  
**SQUARE CUSHION MODIFIED BRILLIANT**  
8.06 X 7.73 X 4.90 MM  
2.67 CARATS  
FANCY VIVID GREEN  
VS 1  
63.4%  
48.5%  
12%  
Medium to Slightly Thick (Faceted)  
Pointed  
EXCELLENT  
EXCELLENT  
NONE  
IGI LG720561415  
Comments: This Laboratory Grown Diamond was created by Chemical Vapor Deposition (CVD) growth process. Indications of post-growth treatment.