



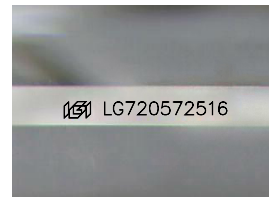
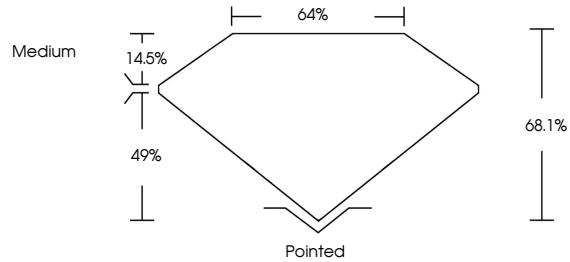
**INTERNATIONAL  
GEMOLOGICAL  
INSTITUTE**

**ELECTRONIC COPY**

## LABORATORY GROWN DIAMOND REPORT

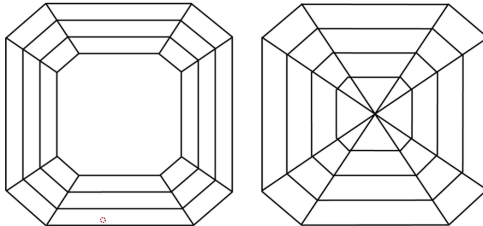
LG720572516  
Report verification at [igi.org](https://igi.org)

## PROPORTIONS



Sample Image Used

## CLARITY CHARACTERISTICS



## KEY TO SYMBOLS

Red symbols indicate internal characteristics.  
Green symbols indicate external characteristics.

## COLOR

D E F G H I J Faint Very Light Light

## CLARITY

IF	WS <sup>1-2</sup>	VS <sup>1-2</sup>	SI <sup>1-2</sup>	I <sup>1-3</sup>
----	-------------------	-------------------	-------------------	------------------

Internally Flawless	Very Very Slightly Included	Very Slightly Included	Slightly Included	Included
------------------------	--------------------------------	---------------------------	----------------------	----------



© IGI 2020, International Gemological Institute

FD - 10 20

**www.igi.org**

## LABORATORY GROWN DIAMOND REPORT



July 8, 2025

IGI Report Number **LG720572516**

Description	LABORATORY GROWN DIAMOND
-------------	--------------------------

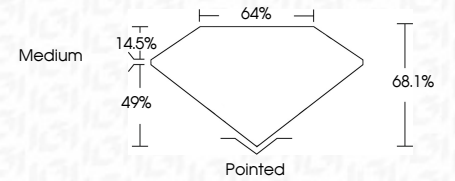
Shape and Cutting Style **SQUARE EMERALD CUT**

Measurements **6.84 X 6.75 X 4.60 MM**

## GRADING RESULTS

Carat Weight **1.89 CARAT**

Color Grade **D**

Clarity Grade **VVS 2**

### ADDITIONAL GRADING INFORMATION

Polish **EXCELLENT**Symmetry **EXCELLENT**Fluorescence **NONE**Inscription(s)  LG720572516

Comments: This Laboratory Grown Diamond was created by Chemical Vapor Deposition (CVD) growth process.  
Type IIa



IGI

July 8, 2025	IGI Report No. IGR202572516	1.95 CARAT	D	VVS 2	68.1%	64%	Medium	Pointed	EXCELLENT	EXCELLENT	NONE	IGI IGR202572516
SQUARE EMERALD CUT		6.61 X 5.75 X 4.60 MM	Carat Weight	Color Grade	Clarity Grade	Depth	Table	Girdle	Culet	Polish	Symmetry	Fluorescence
												Inscription(s)
Comments: This Laboratory Grown Diamond was created by Chemical Vapor Deposition (CVD) growth process. Type IId												

This Laboratory Grown Diamond was created by Chemical Vapor Deposition (CVD) growth process.  
Type IIa