



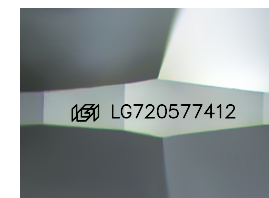
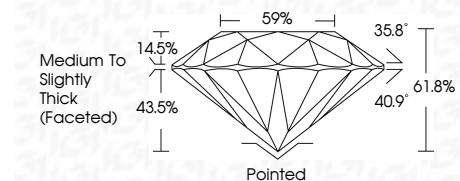
ELECTRONIC COPY

LG720577412
Report verification at igi.org



July 7, 2025
IGI Report Number LG720577412
Description LABORATORY GROWN DIAMOND
Shape and Cutting Style ROUND BRILLIANT
Measurements 8.74 - 8.79 X 5.42 MM

GRADING RESULTS
Carat Weight 2.59 CARATS
Color Grade E
Clarity Grade VS 1
Cut Grade IDEAL



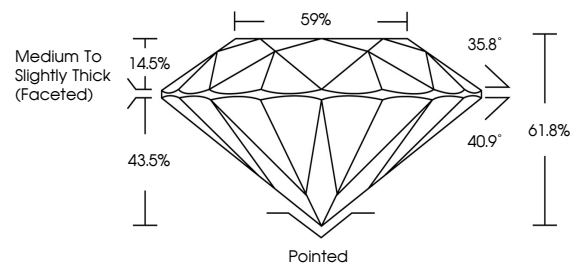
Sample Image Used

ADDITIONAL GRADING INFORMATION
Polish EXCELLENT
Symmetry EXCELLENT
Fluorescence NONE
Inscription(s) LG720577412
Comments: This Laboratory Grown Diamond was created by Chemical Vapor Deposition (CVD) growth process. Type IIa

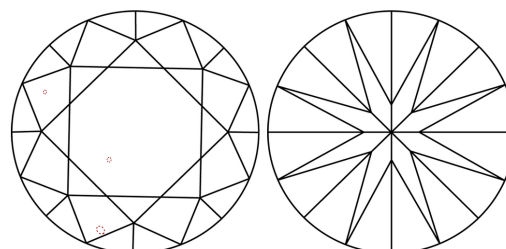


July 7, 2025
IGI Report No LG720577412
ROUND BRILLIANT
8.74 - 8.79 X 5.42 MM
2.59 CARATS E
Color Grade VS 1 IDEAL
Clarity Grade VS 1 IDEAL
Depth 61.8%
Table 59%
Medium To Slightly Thick (Faceted)
Cutler Pointed EXCELLENT
Polish EXCELLENT
Symmetry EXCELLENT
Fluorescence NONE
Inscriptions(s) LG720577412
Comments: This Laboratory Grown Diamond was created by Chemical Vapor Deposition (CVD) growth process. Type IIa

PROPORTIONS



CLARITY CHARACTERISTICS



KEY TO SYMBOLS

Red symbols indicate internal characteristics.
Green symbols indicate external characteristics.

COLOR

D E F G H I J Faint Very Light Light

CLARITY

IF WS 1-2 VS 1-2 SI 1-2 I 1-3
Internally Flawless Very Very Slightly Included Very Slightly Included Slightly Included Included

