

**ELECTRONIC COPY**

## LABORATORY GROWN DIAMOND REPORT

July 9, 2025	
IGI Report Number	LG720586696
Description	LABORATORY GROWN DIAMOND
Shape and Cutting Style	ROUND BRILLIANT
Measurements	10.35 - 10.40 X 6.45 MM

## GRADING RESULTS

Carat Weight	4.28 CARATS
Color Grade	G
Clarity Grade	VVS 1
Cut Grade	IDEAL

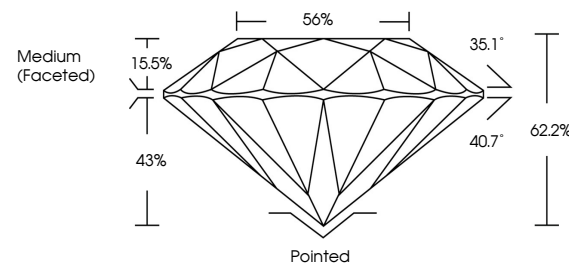
### ADDITIONAL GRADING INFORMATION

Polish	EXCELLENT
Symmetry	EXCELLENT
Fluorescence	NONE
Inscription(s)	 LG720586696

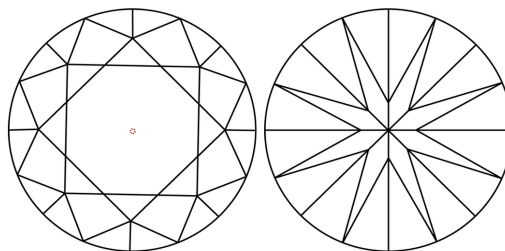
Comments: As Grown - No indication of post-growth treatment.  
This Laboratory Grown Diamond was created by High Pressure High Temperature (HPHT) growth process.  
Type II  
Faint Blue

LG720586696  
Report verification at [igi.org](https://igi.org)

## PROPORTIONS

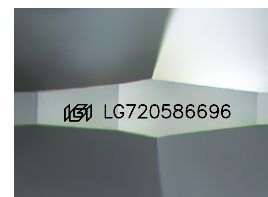


## CLARITY CHARACTERISTICS



## KEY TO SYMBOLS

Red symbols indicate internal characteristics.  
Green symbols indicate external characteristics.



Sample Image Used

## COLOR

D E F G H I J      Faint      Very Light      Light

## CLARITY

IF                      VS<sup>1-2</sup>                      VS<sup>1-2</sup>                      SI<sup>1-2</sup>                      |<sup>1-3</sup>

Internally Flawless	Very Very Slightly Included	Very Slightly Included	Slightly Included	Included
------------------------	--------------------------------	---------------------------	----------------------	----------

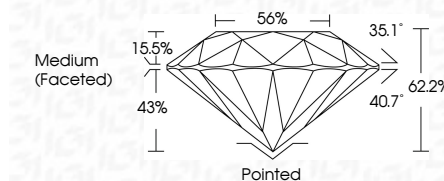
## LABORATORY GROWN DIAMOND REPORT



July 9, 2025	
IGI Report Number	LG720586696
Description	LABORATORY GROWN DIAMOND
Shape and Cutting Style	ROUND BRILLIANT
Measurements	10.35 - 10.40 X 6.45 MM

## GRADING RESULTS

Carat Weight	4.28 CARATS
Color Grade	G
Clarity Grade	VVS 1
Cut Grade	IDEAL



### ADDITIONAL GRADING INFORMATION

Polish	EXCELLENT
Symmetry	EXCELLENT
Fluorescence	NONE
Inscription(s)	(15) LG720586696
Comments: As Grown - No indication of post-growth treatment.	
This Laboratory Grown Diamond was created by High Pressure High Temperature (HPHT) growth process.	
Type II	
Faint Blue	



© IGI 2020, International Gemological Institute

FD - 10 20

July 9, 2025	IGI Report No. G2720586496	ROUND BRILLIANT	10.95 - 10.40 X 6.65 MM	Carat Weight	4.28 CARATS	G	VVS 1	IDEAL	62.2%	56%	Medium (Faceted)	Pointed	EXCELLENT	EXCELLENT	NONE	IGI G2720586496	Comments: None - No indication of post-growth treatment. This Laboratory Growth Diamond was created by High Pressure High Temperature (HPHT) growth process. Type IIa
				Color Grade			Clarity Grade	Cut Grade	Depth	Table	Grade	Culet	Polish	Symmetry	Fluorescence	Inscriptions(s)	