



INTERNATIONAL GEMOLOGICAL INSTITUTE

ELECTRONIC COPY

LABORATORY GROWN DIAMOND REPORT

July 8, 2025
IGI Report Number **LG720590494**
Description **LABORATORY GROWN DIAMOND**
Shape and Cutting Style **PEAR BRILLIANT**
Measurements **7.05 X 4.48 X 2.83 MM**

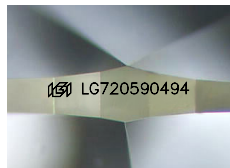
GRADING RESULTS

Carat Weight **0.52 CARAT**
Color Grade **E**
Clarity Grade **INTERNALLY FLAWLESS**

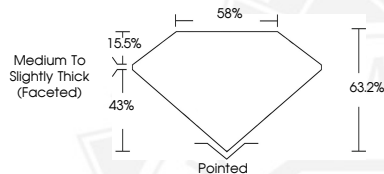
ADDITIONAL GRADING INFORMATION

Polish **EXCELLENT**
Symmetry **EXCELLENT**
Fluorescence **NONE**
Inscription(s) **(IGI) LG720590494**

Comments: As Grown - No indication of post-growth treatment. This Laboratory Grown Diamond was created by High Pressure High Temperature (HPHT) growth process. Type II



Sample Image Used



July 8, 2025
IGI Report Number **LG720590494**
PEAR BRILLIANT
LABORATORY GROWN DIAMOND
7.05 X 4.48 X 2.83 MM
Carat Weight **0.52 CARAT**
Color Grade **E**
Clarity Grade **I.F.**
Polish **EXCELLENT**
Symmetry **EXCELLENT**
Fluorescence **NONE**
Inscription(s) **(IGI) LG720590494**
Comments: As Grown - No indication of post-growth treatment. This Laboratory Grown Diamond was created by High Pressure High Temperature (HPHT) growth process. Type II



July 8, 2025
IGI Report Number **LG720590494**
PEAR BRILLIANT
LABORATORY GROWN DIAMOND
7.05 X 4.48 X 2.83 MM
Carat Weight **0.52 CARAT**
Color Grade **E**
Clarity Grade **I.F.**
Polish **EXCELLENT**
Symmetry **EXCELLENT**
Fluorescence **NONE**
Inscription(s) **(IGI) LG720590494**
Comments: As Grown - No indication of post-growth treatment. This Laboratory Grown Diamond was created by High Pressure High Temperature (HPHT) growth process. Type II



THIS DOCUMENT WAS PRODUCED WITH THE FOLLOWING SECURITY MEASURES: SPECIAL DOCUMENT PAPER, INK SCREENS, WATERMARK, BACKGROUND DESIGNS, HOLOGRAM AND OTHER SECURITY FEATURES NOT LISTED AND DO EXCEED DOCUMENT SECURITY INDUSTRY GUIDELINES.

For terms & conditions and to verify this report, please visit www.igi.org