



ELECTRONIC COPY

LG720594537
Report verification at igi.org



July 19, 2025
IGI Report Number **LG720594537**
Description **LABORATORY GROWN DIAMOND**
Shape and Cutting Style **CUSHION MODIFIED BRILLIANT**
Measurements **12.53 X 9.42 X 6.19 MM**
GRADING RESULTS
Carat Weight **6.51 CARATS**
Color Grade **FANCY VIVID RED**
Clarity Grade **VVS 2**

LABORATORY GROWN DIAMOND REPORT

July 19, 2025
IGI Report Number **LG720594537**
Description **LABORATORY GROWN DIAMOND**
Shape and Cutting Style **CUSHION MODIFIED BRILLIANT**
Measurements **12.53 X 9.42 X 6.19 MM**

GRADING RESULTS

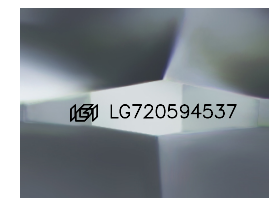
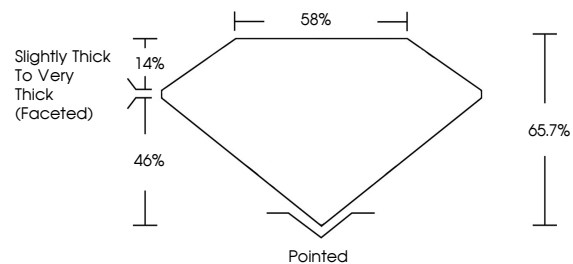
Carat Weight **6.51 CARATS**
Color Grade **FANCY VIVID RED**
Clarity Grade **VVS 2**

ADDITIONAL GRADING INFORMATION

Polish **EXCELLENT**
Symmetry **VERY GOOD**
Fluorescence **SLIGHT**
Inscription(s) **IGI LG720594537**

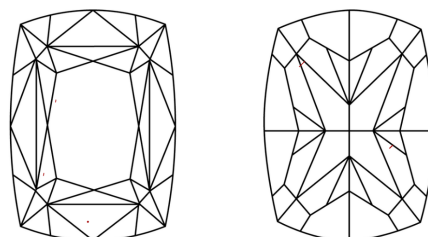
Comments: This Laboratory Grown Diamond was created by Chemical Vapor Deposition (CVD) growth process. Indications of post-growth treatment.

PROPORTIONS



Sample Image Used

CLARITY CHARACTERISTICS



KEY TO SYMBOLS

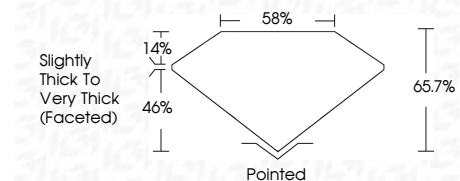
Red symbols indicate internal characteristics.
Green symbols indicate external characteristics.

COLOR

D E F G H I J Faint Very Light Light

CLARITY

IF	VS ¹⁻²	VS ¹⁻²	SI ¹⁻²	I ¹⁻³
Internally Flawless	Very Very Slightly Included	Very Slightly Included	Slightly Included	Included



ADDITIONAL GRADING INFORMATION

Polish **EXCELLENT**
Symmetry **VERY GOOD**
Fluorescence **SLIGHT**
Inscription(s) **IGI LG720594537**
Comments: This Laboratory Grown Diamond was created by Chemical Vapor Deposition (CVD) growth process. Indications of post-growth treatment.



July 19, 2025
IGI Report No **LG720594537**
CUSHION MODIFIED BRILLIANT
6.51 CARATS
Carat Weight **FANCY VIVID RED**
Color Grade **VVS 2**
Clarity Grade **65.7%**
Depth **58%**
Table **Slightly Thick To Very Thick (Faceted)**
Girdle **Pointed**
Culet **EXCELLENT**
Polish **VERY GOOD**
Symmetry **SLIGHT**
Fluorescence **IGI LG720594537**
Inscription(s)

Comments: This Laboratory Grown Diamond was created by Chemical Vapor Deposition (CVD) growth process. Indications of post-growth treatment.