



ELECTRONIC COPY

LG720599111
Report verification at igi.org



July 10, 2025

IGI Report Number LG720599111

Description LABORATORY GROWN DIAMOND

Shape and Cutting Style PRINCESS CUT

Measurements 12.33 X 12.23 X 8.41 MM

GRADING RESULTS

Carat Weight 11.54 CARATS

Color Grade E

Clarity Grade VVS 2

July 10, 2025
IGI Report Number LG720599111
Description LABORATORY GROWN DIAMOND
Shape and Cutting Style PRINCESS CUT
Measurements 12.33 X 12.23 X 8.41 MM

GRADING RESULTS

Carat Weight 11.54 CARATS

Color Grade E

Clarity Grade VVS 2

ADDITIONAL GRADING INFORMATION

Polish EXCELLENT

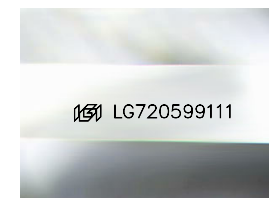
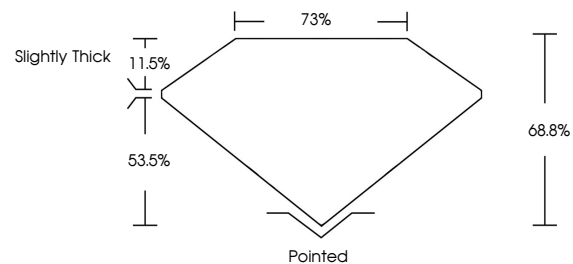
Symmetry EXCELLENT

Fluorescence NONE

Inscription(s) IGI LG720599111

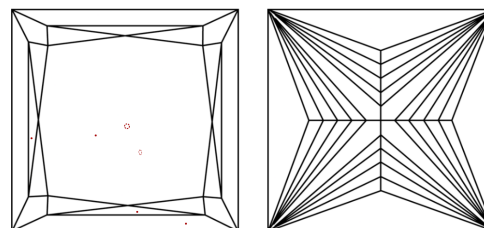
Comments: This Laboratory Grown Diamond was created by Chemical Vapor Deposition (CVD) growth process. Type IIa

PROPORTIONS



Sample Image Used

CLARITY CHARACTERISTICS



KEY TO SYMBOLS

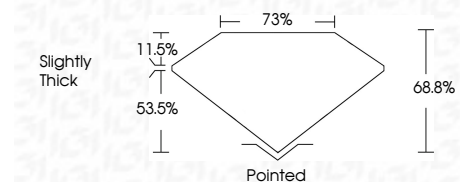
Red symbols indicate internal characteristics.
Green symbols indicate external characteristics.

COLOR

D E F G H I J Faint Very Light Light

CLARITY

IF WS 1-2 VS 1-2 SI 1-2 I 1-3
Internally Flawless Very Very Slightly Included Very Slightly Included Slightly Included Included



ADDITIONAL GRADING INFORMATION

Polish EXCELLENT

Symmetry EXCELLENT

Fluorescence NONE

Inscription(s) IGI LG720599111

Comments: This Laboratory Grown Diamond was created by Chemical Vapor Deposition (CVD) growth process. Type IIa



IGI



July 10, 2025
IGI Report No LG720599111
PRINCESS CUT
12.33 X 12.23 X 8.41 MM
11.54 CARATS
Color Grade E
Depth 68.8%
Table 73%
Grades Slightly Thick
Pointed
Polish EXCELLENT
Symmetry EXCELLENT
Fluorescence NONE
Inscription(s) IGI LG720599111
Comments: This Laboratory Grown Diamond was created by Chemical Vapor Deposition (CVD) growth process. Type IIa