



ELECTRONIC COPY

LABORATORY GROWN DIAMOND REPORT

July 10, 2025	
IGI Report Number	LG722507823
Description	LABORATORY GROWN DIAMOND
Shape and Cutting Style	CUSHION MODIFIED BRILLIANT
Measurements	10.09 X 7.38 X 5.05 MM

GRADING RESULTS

Carat Weight	3.04 CARATS
Color Grade	G
Clarity Grade	VS 1

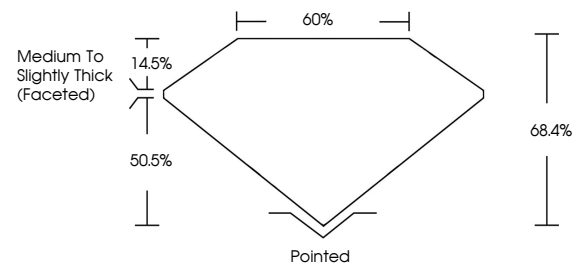
ADDITIONAL GRADING INFORMATION

Polish	EXCELLENT
Symmetry	EXCELLENT
Fluorescence	NONE
Inscription(s)	 LG722507823

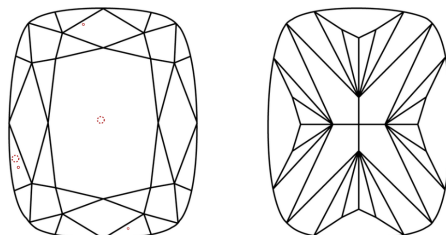
Comments: This Laboratory Grown Diamond was created by Chemical Vapor Deposition (CVD) growth process.
Type IIa

LG722507823
Report verification at igi.org

PROPORTIONS

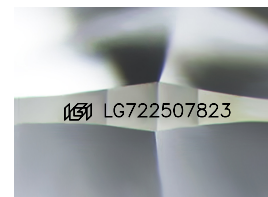


CLARITY CHARACTERISTICS



KEY TO SYMBOLS

Red symbols indicate internal characteristics.
Green symbols indicate external characteristics.



Sample Image Used

COLOR

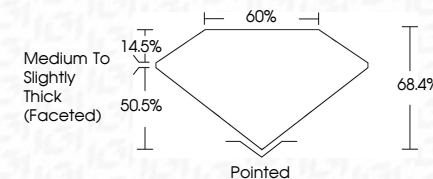
D E F G H I J Faint Very Light Light

CLARITY

IF	VS ¹⁻²	VS ¹⁻²	SI ¹⁻²	I ¹⁻³
Internally Flawless	Very Very Slightly Included	Very Slightly Included	Slightly Included	Included



July 10, 2025	
IGI Report Number	LG722607823
Description	LABORATORY GROWN DIAMOND
Shape and Cutting Style	CUSHION MODIFIED BRILLIANT
Measurements	10.09 X 7.38 X 5.05 MM
GRADING RESULTS	
Carat Weight	3.04 CARATS
Color Grade	G
Clarity Grade	VS 1



ADDITIONAL GRADING INFORMATION

Polish	EXCELLENT
Symmetry	EXCELLENT
Fluorescence	NONE
Inscription(s)	 LG722507823
<p>Comments: This Laboratory Grown Diamond was created by Chemical Vapor Deposition (CVD) growth process.</p> <p>Type IIa</p>	



© IGI 2020, International Gemological Institute

FD - 10 20



THIS DOCUMENT WAS PRODUCED WITH THE FOLLOWING SECURITY MEASURES: SPECIAL DOCUMENT PAPER, INK SCREENS, WATERMARK, BACKGROUND DESIGNS, HOLOGRAM AND OTHER SECURITY FEATURES NOT LISTED AND DO EXCEED DOCUMENT SECURITY INDUSTRY GUIDELINES

www.igi.org

July 10, 2025
GI Report No LG72507823
VISION MODIFIED BRILLIANT

10.09 X 7.35 X 5.05 MM	3.04 CARATS	
Carat Weight	VS 1	68.4%
Color Grade		60%
Clarity Grade	Medium To Slightly Thick (Faceted)	
Depth	Pointed	
Table	EXCELLENT	
Girdle	EXCELLENT	
Culet	NONE	
Polish		
Symmetry		
Fluorescence		

Comments:
This Laboratory Grown Diamond was created by Chemical Vapor Deposition (CVD) growth process.