



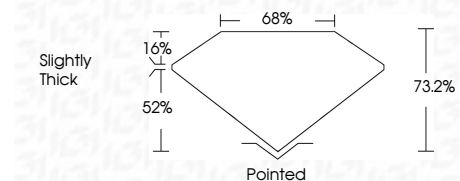
ELECTRONIC COPY

LG722510370
Report verification at igi.org



July 17, 2025
IGI Report Number **LG722510370**
Description **LABORATORY GROWN DIAMOND**
Shape and Cutting Style **PRINCESS CUT**
Measurements **7.52 X 7.40 X 5.42 MM**

GRADING RESULTS
Carat Weight **2.77 CARATS**
Color Grade **FANCY VIVID PINK**
Clarity Grade **VS 1**



ADDITIONAL GRADING INFORMATION
Polish **EXCELLENT**
Symmetry **EXCELLENT**
Fluorescence **STRONG**
Inscription(s) **IGI LG722510370**
Comments: This Laboratory Grown Diamond was created by Chemical Vapor Deposition (CVD) growth process. Indications of post-growth treatment.



July 17, 2025
IGI Report No LG722510370
PRINCESS CUT
2.77 CARATS
FANCY VIVID PINK
VS 1
7.52 X 7.40 X 5.42 MM
73.2%
16%
52%
Slightly Thick
Pointed
EXCELLENT
EXCELLENT
STRONG
IGI LG722510370
Comments: This Laboratory Grown Diamond was created by Chemical Vapor Deposition (CVD) growth process. Indications of post-growth treatment.

LABORATORY GROWN DIAMOND REPORT

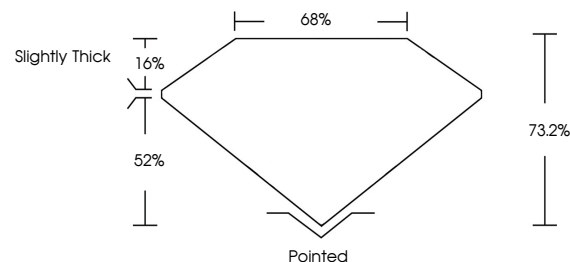
July 17, 2025
IGI Report Number **LG722510370**
Description **LABORATORY GROWN DIAMOND**
Shape and Cutting Style **PRINCESS CUT**
Measurements **7.52 X 7.40 X 5.42 MM**

GRADING RESULTS
Carat Weight **2.77 CARATS**
Color Grade **FANCY VIVID PINK**
Clarity Grade **VS 1**

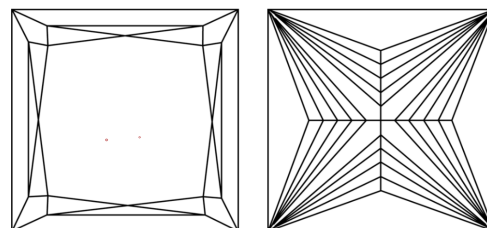
ADDITIONAL GRADING INFORMATION
Polish **EXCELLENT**
Symmetry **EXCELLENT**
Fluorescence **STRONG**
Inscription(s) **IGI LG722510370**

Comments: This Laboratory Grown Diamond was created by Chemical Vapor Deposition (CVD) growth process. Indications of post-growth treatment.

PROPORTIONS

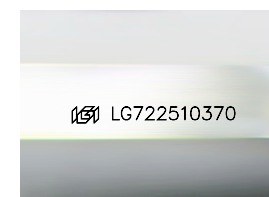


CLARITY CHARACTERISTICS



KEY TO SYMBOLS

Red symbols indicate internal characteristics.
Green symbols indicate external characteristics.



Sample Image Used

COLOR

D E F G H I J Faint Very Light Light

CLARITY

IF	VS ¹⁻²	VS ¹⁻²	SI ¹⁻²	I ¹⁻³
Internally Flawless	Very Very Slightly Included	Very Slightly Included	Slightly Included	Included