



ELECTRONIC COPY

LG722511187
Report verification at igi.org



July 14, 2025

IGI Report Number **LG722511187**

Description **LABORATORY GROWN DIAMOND**

Shape and Cutting Style **SQUARE EMERALD CUT**

Measurements **6.66 X 6.60 X 4.26 MM**

GRADING RESULTS

Carat Weight **1.73 CARAT**

Color Grade **D**

Clarity Grade **VVS 2**

July 14, 2025

IGI Report Number **LG722511187**

Description **LABORATORY GROWN DIAMOND**

Shape and Cutting Style **SQUARE EMERALD CUT**

Measurements **6.66 X 6.60 X 4.26 MM**

GRADING RESULTS

Carat Weight **1.73 CARAT**

Color Grade **D**

Clarity Grade **VVS 2**

ADDITIONAL GRADING INFORMATION

Polish **EXCELLENT**

Symmetry **EXCELLENT**

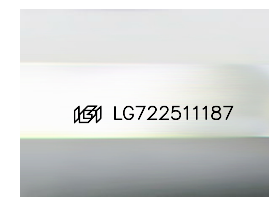
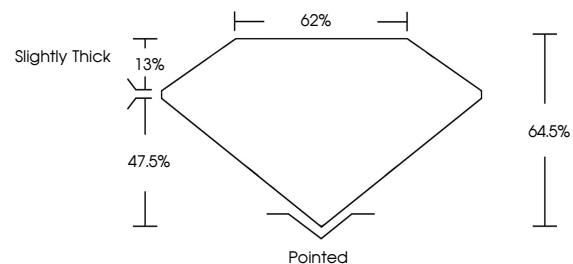
Fluorescence **NONE**

Inscription(s) **IGI LG722511187**

Comments: As Grown - No indication of post-growth treatment.

This Laboratory Grown Diamond was created by High Pressure High Temperature (HPHT) growth process. Type II

PROPORTIONS



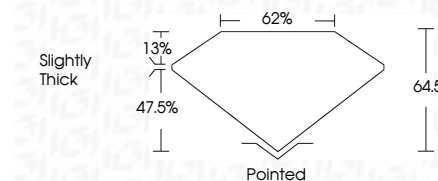
Sample Image Used

COLOR

D E F G H I J Faint Very Light Light

CLARITY

| IF | VS ¹⁻² | VS ¹⁻² | SI ¹⁻² | I ¹⁻³ |
|---------------------|-----------------------------|------------------------|-------------------|------------------|
| Internally Flawless | Very Very Slightly Included | Very Slightly Included | Slightly Included | Included |



ADDITIONAL GRADING INFORMATION

Polish **EXCELLENT**

Symmetry **EXCELLENT**

Fluorescence **NONE**

Inscription(s) **IGI LG722511187**

Comments: As Grown - No indication of post-growth treatment.

This Laboratory Grown Diamond was created by High Pressure High Temperature (HPHT) growth process. Type II



IGI



| | | |
|---------------------------|-----------------|-------|
| July 14, 2025 | 1.73 CARAT | D |
| IGI Report No LG722511187 | VVS 2 | VVS 2 |
| SQUARE EMERALD CUT | 64.0% | 62% |
| 6.66 X 6.60 X 4.26 MM | Slightly Thick | |
| Carat Weight | Pointed | |
| Color Grade | EXCELLENT | |
| Clarity Grade | EXCELLENT | |
| Depth | NONE | |
| Table | IGI LG722511187 | |
| Graile | | |
| Culet | | |
| Polish | | |
| Symmetry | | |
| Fluorescence | | |
| Inscription(s) | | |

Comments: As Grown - No indication of post-growth treatment. This Laboratory Grown Diamond was created by High Pressure High Temperature (HPHT) growth process. Type II