



ELECTRONIC COPY

LG722534964
Report verification at igi.org



August 22, 2025
IGI Report Number **LG722534964**
Description **LABORATORY GROWN DIAMOND**
Shape and Cutting Style **RECTANGULAR CUSHION MIXED CUT**
Measurements **23.28 X 13.21 X 8.54 MM**
GRADING RESULTS
Carat Weight **25.43 CARATS**
Color Grade **FANCY PINKISH BROWN**
Clarity Grade **SI 1**

LABORATORY GROWN DIAMOND REPORT

August 22, 2025
IGI Report Number **LG722534964**
Description **LABORATORY GROWN DIAMOND**
Shape and Cutting Style **RECTANGULAR CUSHION MIXED CUT**
Measurements **23.28 X 13.21 X 8.54 MM**

GRADING RESULTS

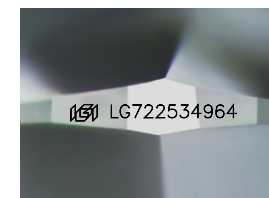
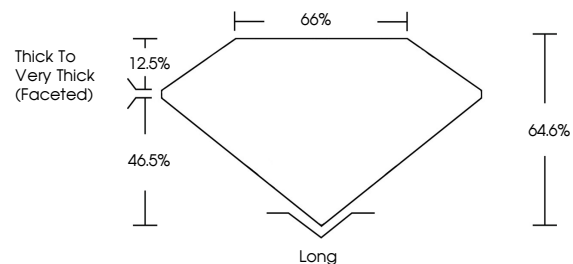
Carat Weight **25.43 CARATS**
Color Grade **FANCY PINKISH BROWN**
Clarity Grade **SI 1**

ADDITIONAL GRADING INFORMATION

Polish **EXCELLENT**
Symmetry **EXCELLENT**
Fluorescence **NONE**
Inscription(s) **IGI LG722534964**

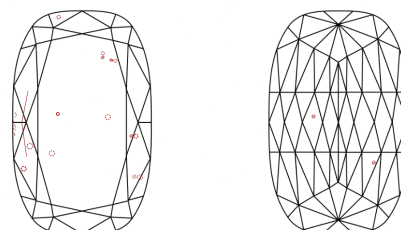
Comments: This Laboratory Grown Diamond was created by Chemical Vapor Deposition (CVD) growth process.
Indications of post-growth treatment.

PROPORTIONS



Sample Image Used

CLARITY CHARACTERISTICS



KEY TO SYMBOLS

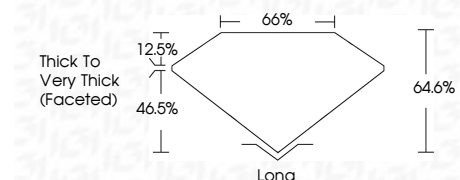
Red symbols indicate internal characteristics.
Green symbols indicate external characteristics.

COLOR

D E F G H I J Faint Very Light Light

CLARITY

IF	VS ¹⁻²	VS ¹⁻²	SI ¹⁻²	I ¹⁻³
Internally Flawless	Very Very Slightly Included	Very Slightly Included	Slightly Included	Included



ADDITIONAL GRADING INFORMATION

Polish **EXCELLENT**
Symmetry **EXCELLENT**
Fluorescence **NONE**
Inscription(s) **IGI LG722534964**
Comments: This Laboratory Grown Diamond was created by Chemical Vapor Deposition (CVD) growth process.
Indications of post-growth treatment.



August 22, 2025
IGI Report No LG722534964
RECTANGULAR CUSHION MIXED CUT
23.28 X 13.21 X 8.54 MM
Carat Weight **25.43 CARATS**
Color Grade **FANCY PINKISH BROWN**
Clarity Grade **SI 1**
Depth **46.5%**
Table **12.5%**
Girdle **64.6%**
Thick to Very Thick (Faceted)
Culet **Long**
Polish **EXCELLENT**
Symmetry **EXCELLENT**
Fluorescence **NONE**
Inscription(s) **IGI LG722534964**
Comments: This Laboratory Grown Diamond was created by Chemical Vapor Deposition (CVD) growth process.
Indications of post-growth treatment.