



ELECTRONIC COPY

LG722554952
Report verification at igi.org



July 14, 2025

IGI Report Number **LG722554952**

Description **LABORATORY GROWN DIAMOND**

Shape and Cutting Style **ROUND BRILLIANT**

Measurements **12.41 - 12.45 X 7.54 MM**

GRADING RESULTS

Carat Weight **7.05 CARATS**

Color Grade **E**

Clarity Grade **VVS 2**

Cut Grade **IDEAL**

July 14, 2025
IGI Report Number **LG722554952**
Description **LABORATORY GROWN DIAMOND**
Shape and Cutting Style **ROUND BRILLIANT**
Measurements **12.41 - 12.45 X 7.54 MM**

GRADING RESULTS

Carat Weight **7.05 CARATS**

Color Grade **E**

Clarity Grade **VVS 2**

Cut Grade **IDEAL**

ADDITIONAL GRADING INFORMATION

Polish **EXCELLENT**

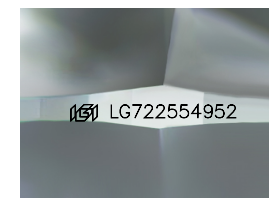
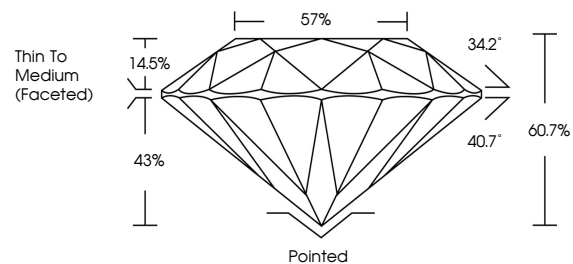
Symmetry **EXCELLENT**

Fluorescence **NONE**

Inscription(s) **IGI LG722554952**

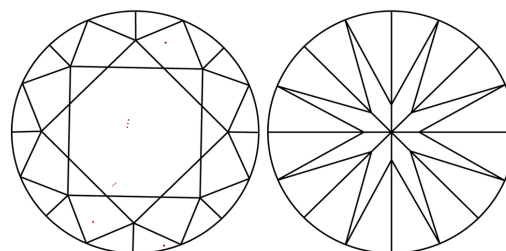
Comments: HEARTS & ARROWS
This Laboratory Grown Diamond was created by
Chemical Vapor Deposition (CVD) growth process.
Type IIa

PROPORTIONS



Sample Image Used

CLARITY CHARACTERISTICS



KEY TO SYMBOLS

Red symbols indicate internal characteristics.
Green symbols indicate external characteristics.



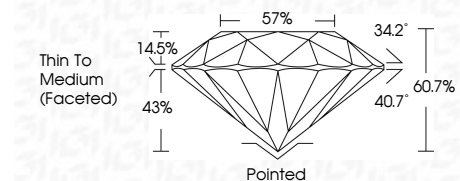
COLOR

D E F G H I J Faint Very Light Light

CLARITY

IF VS¹⁻² VS¹⁻² SI¹⁻² I¹⁻³

Internally Flawless Very Very Slightly Included Very Slightly Included Slightly Included Included



ADDITIONAL GRADING INFORMATION

Polish **EXCELLENT**

Symmetry **EXCELLENT**

Fluorescence **NONE**

Inscription(s) **IGI LG722554952**

Comments: HEARTS & ARROWS
This Laboratory Grown Diamond was created by
Chemical Vapor Deposition (CVD) growth process.
Type IIa



IGI



| | | | | | | | | | | | | | | | |
|---------------|---------------------------|-----------------|-------------------------|----------------|--------------|-------------|---------------|-------|-------|--------------------------|---------|-----------|-----------|--------------|-----------------|
| July 14, 2025 | IGI Report No LG722554952 | ROUND BRILLIANT | 12.41 - 12.45 X 7.54 MM | 7.05 CARATS | E | VVS 2 | IDEAL | 60.7% | 57% | Thin To Medium (Faceted) | Pointed | EXCELLENT | EXCELLENT | NONE | IGI LG722554952 |
| Cutter | Polish | Symmetry | Fluorescence | Inscription(s) | Carat Weight | Color Grade | Clarity Grade | Depth | Table | Girdle | Culet | Polish | Symmetry | Fluorescence | Inscription(s) |

Comments: HEARTS & ARROWS
This Laboratory Grown Diamond was created by Chemical Vapor Deposition (CVD) growth process.
Type IIa