

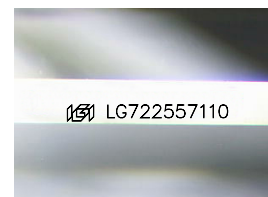
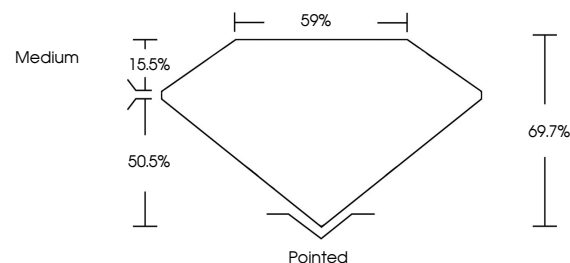


**ELECTRONIC COPY**

## LABORATORY GROWN DIAMOND REPORT

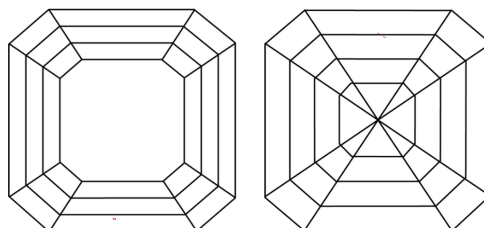
LG722557110  
Report verification at [igi.org](https://igi.org)

## PROPORTIONS



Sample Image Used

## CLARITY CHARACTERISTICS



## KEY TO SYMBOLS

Red symbols indicate internal characteristics.  
Green symbols indicate external characteristics.

## COLOR

D E F G H I J Faint Very Light Light

## CLARITY

IF      VWS<sup>1-2</sup>      VS<sup>1-2</sup>      SI<sup>1-2</sup>      I<sup>1-3</sup>

Internally Flawless	Very Very Slightly Included	Very Slightly Included	Slightly Included	Included
------------------------	--------------------------------	---------------------------	----------------------	----------

## LABORATORY GROWN DIAMOND REPORT



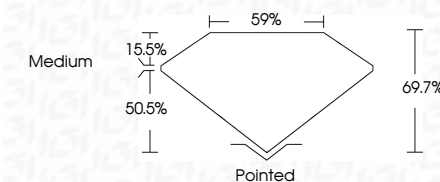
July 14, 2025

IGI Report Number **LG722557110**Description **LABORATORY GROWN DIAMOND**Shape and Cutting Style **SQUARE EMERALD CUT**

Measurements **5.57 X 5.47 X 3.81 MM**

## GRADING RESULTS

Carat Weight **1.04 CARAT**

Color Grade FClarity Grade **VVS 2**

### ADDITIONAL GRADING INFORMATION

Polish EXCELLENT

Symmetry **EXCELLENT**Fluorescence **NONE**Inscription(s)  LG722557110

Comments: This Laboratory Grown Diamond was created by Chemical Vapor Deposition (CVD) growth process.  
Type IIa



July 14, 2025	GI Report No LG72557110	1.04 CARAT	VVS 2	Polished	Comments: This very fine, crown diamond was created by Chemical Vapor Deposition (CVD) growth process. Type Iia
SQUARE EMERALD CUT	5.67 X 5.47 X 3.81 MM	69.7%	Excellent	#69 LG72557110	
	Color Grade	69%	Medium		
	Carat Weight				
	Clarity Grade				
	Depth				
	Table				
	Girdle				
	Culet				
	Polish				
	Symmetry				
	Fluorescence				
	Inscription(s)				

**Comments:**  
This Laboratory Grown Diamond was created by Chemical Vapor Deposition (CVD) growth process.



THIS DOCUMENT WAS PRODUCED WITH THE FOLLOWING SECURITY MEASURES: SPECIAL DOCUMENT PAPER, INK SCREENS, WATERMARK, BACKGROUND DESIGNS, HOLOGRAM AND OTHER SECURITY FEATURES NOT LISTED AND DO EXCEED DOCUMENT SECURITY INDUSTRY GUIDELINE