



ELECTRONIC COPY

LG722564574
Report verification at igi.org



September 29, 2025
IGI Report Number **LG722564574**

Description **LABORATORY GROWN DIAMOND**

Shape and Cutting Style **CUT CORNERED
RECTANGULAR MODIFIED
BRILLIANT**

Measurements **9.43 X 6.54 X 4.28 MM**

GRADING RESULTS

Carat Weight **2.30 CARATS**

Color Grade **FANCY VIVID BLUE**

Clarity Grade **VVS 2**

September 29, 2025
IGI Report Number **LG722564574**
Description **LABORATORY GROWN DIAMOND**
Shape and Cutting Style **CUT CORNERED RECTANGULAR
MODIFIED BRILLIANT**
Measurements **9.43 X 6.54 X 4.28 MM**

GRADING RESULTS

Carat Weight **2.30 CARATS**

Color Grade **FANCY VIVID BLUE**

Clarity Grade **VVS 2**

ADDITIONAL GRADING INFORMATION

Polish **EXCELLENT**

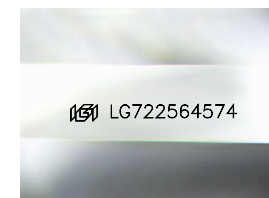
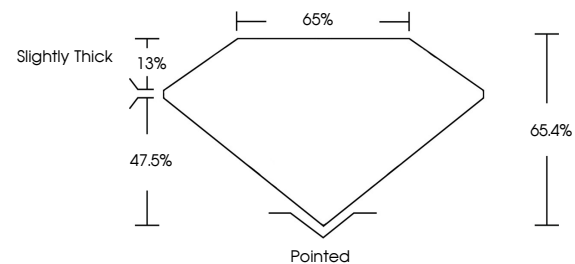
Symmetry **EXCELLENT**

Fluorescence **NONE**

Inscription(s) **IGI LG722564574**

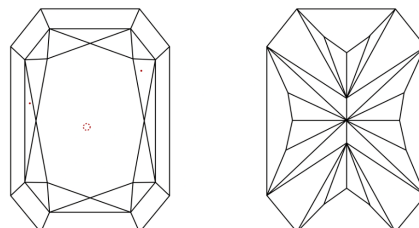
Comments: As Grown - No indication of post-growth treatment.
This Laboratory Grown Diamond was created by High Pressure High Temperature (HPHT) growth process.

PROPORTIONS



Sample Image Used

CLARITY CHARACTERISTICS



KEY TO SYMBOLS

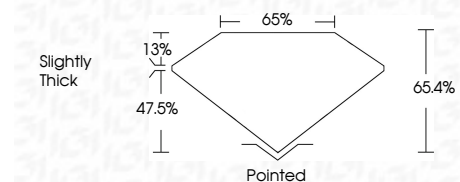
Red symbols indicate internal characteristics.
Green symbols indicate external characteristics.

COLOR

D E F G H I J Faint Very Light Light

CLARITY

FL	IF	VVS ¹⁻²	VS ¹⁻²	SI ¹⁻²	I ¹⁻³
Flawless	Internally Flawless	Very Very Slightly Included	Very Slightly Included	Slightly Included	Included



ADDITIONAL GRADING INFORMATION

Polish **EXCELLENT**

Symmetry **EXCELLENT**

Fluorescence **NONE**

Inscription(s) **IGI LG722564574**

Comments: As Grown - No indication of post-growth treatment.
This Laboratory Grown Diamond was created by High Pressure High Temperature (HPHT) growth process.



IGI



September 29, 2025
IGI Report No. LG722564574
CUT CORNERED RECT. MODIFIED BRILLIANT
9.43 X 6.54 X 4.28 MM
2.30 CARATS
FANCY VIVID BLUE
VVS 2
65.4%
65%
Slightly Thick
Pointed
EXCELLENT
EXCELLENT
NONE
IGI LG722564574
Comments: As Grown - No indication of post-growth treatment.
This Laboratory Grown Diamond was created by High Pressure High Temperature (HPHT) growth process.