



ELECTRONIC COPY

LG722566520
Report verification at igi.org



August 22, 2025
IGI Report Number **LG722566520**
Description **LABORATORY GROWN DIAMOND**
Shape and Cutting Style **CUT CORNERED
RECTANGULAR MODIFIED
BRILLIANT**
Measurements **8.20 X 6.20 X 4.32 MM**
GRADING RESULTS
Carat Weight **2.06 CARATS**
Color Grade **FANCY YELLOW**
Clarity Grade **VVS 1**

LABORATORY GROWN DIAMOND REPORT

August 22, 2025
IGI Report Number **LG722566520**
Description **LABORATORY GROWN DIAMOND**
Shape and Cutting Style **CUT CORNERED RECTANGULAR
MODIFIED BRILLIANT**
Measurements **8.20 X 6.20 X 4.32 MM**

GRADING RESULTS

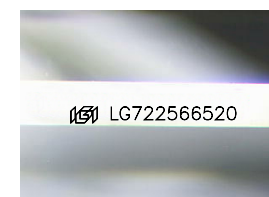
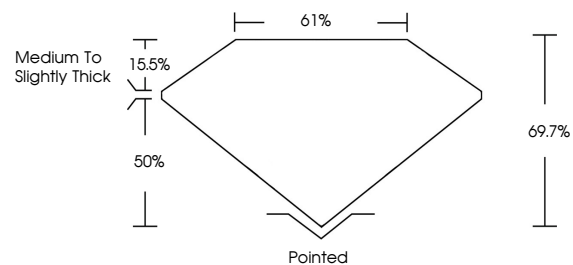
Carat Weight **2.06 CARATS**
Color Grade **FANCY YELLOW**
Clarity Grade **VVS 1**

ADDITIONAL GRADING INFORMATION

Polish **EXCELLENT**
Symmetry **EXCELLENT**
Fluorescence **NONE**
Inscription(s) **IGI LG722566520**

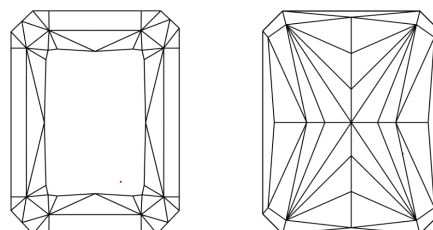
Comments: This Laboratory Grown Diamond was created by Chemical Vapor Deposition (CVD) growth process.

PROPORTIONS



Sample Image Used

CLARITY CHARACTERISTICS



KEY TO SYMBOLS

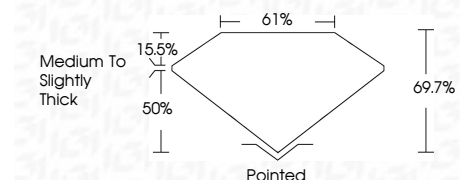
Red symbols indicate internal characteristics.
Green symbols indicate external characteristics.

COLOR

D E F G H I J Faint Very Light Light

CLARITY

IF	VS ¹⁻²	VS ¹⁻²	SI ¹⁻²	I ¹⁻³
Internally Flawless	Very Very Slightly Included	Very Slightly Included	Slightly Included	Included



ADDITIONAL GRADING INFORMATION

Polish **EXCELLENT**
Symmetry **EXCELLENT**
Fluorescence **NONE**
Inscription(s) **IGI LG722566520**
Comments: This Laboratory Grown Diamond was created by Chemical Vapor Deposition (CVD) growth process.



August 22, 2025
IGI Report No LG722566520
CUT CORNERED RECT. MODIFIED BRILLIANT
8.20 X 6.20 X 4.32 MM
2.06 CARATS
FANCY YELLOW
VVS 1
69.7%
61%
Medium to Slightly Thick
Pointed
EXCELLENT
EXCELLENT
NONE
IGI LG722566520
Comments: This Laboratory Grown Diamond was created by Chemical Vapor Deposition (CVD) growth process.