



ELECTRONIC COPY

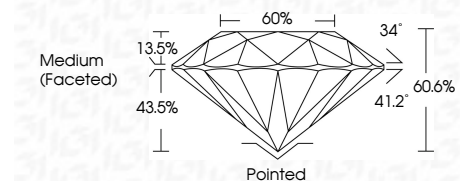
LG722569711
Report verification at igi.org



September 10, 2025
IGI Report Number LG722569711
Description LABORATORY GROWN DIAMOND
Shape and Cutting Style ROUND BRILLIANT
Measurements 8.18 - 8.23 X 4.97 MM

GRADING RESULTS

Carat Weight 2.04 CARATS
Color Grade E
Clarity Grade VVS 2
Cut Grade IDEAL



ADDITIONAL GRADING INFORMATION

Polish EXCELLENT
Symmetry EXCELLENT
Fluorescence NONE
Inscription(s) IGI LG722569711
Comments: This Laboratory Grown Diamond was created by Chemical Vapor Deposition (CVD) growth process. Type IIa



September 10, 2025
IGI Report No LG722569711
ROUND BRILLIANT
8.18 - 8.23 X 4.97 MM
2.04 CARATS
E
VVS 2
IDEAL
60.6%
Medium (Faceted)
Pointed
EXCELLENT
EXCELLENT
NONE
IGI LG722569711
Comments: This Laboratory Grown Diamond was created by Chemical Vapor Deposition (CVD) growth process. Type IIa

September 10, 2025
IGI Report Number LG722569711
Description LABORATORY GROWN DIAMOND
Shape and Cutting Style ROUND BRILLIANT
Measurements 8.18 - 8.23 X 4.97 MM

GRADING RESULTS

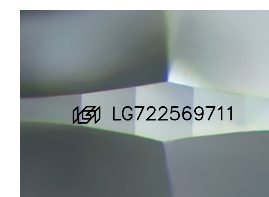
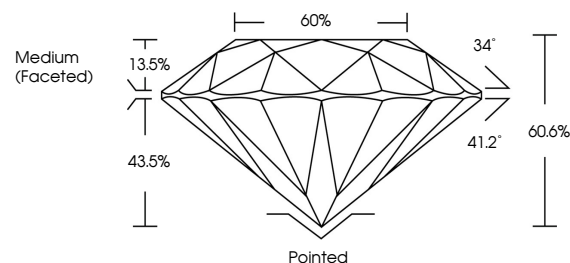
Carat Weight 2.04 CARATS
Color Grade E
Clarity Grade VVS 2
Cut Grade IDEAL

ADDITIONAL GRADING INFORMATION

Polish EXCELLENT
Symmetry EXCELLENT
Fluorescence NONE
Inscription(s) IGI LG722569711

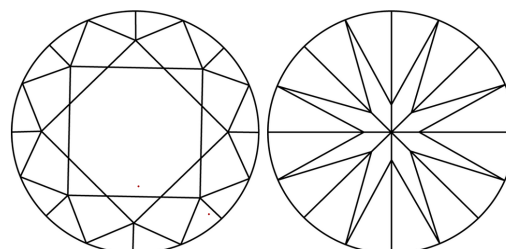
Comments: This Laboratory Grown Diamond was created by Chemical Vapor Deposition (CVD) growth process. Type IIa

PROPORTIONS



Sample Image Used

CLARITY CHARACTERISTICS



KEY TO SYMBOLS

Red symbols indicate internal characteristics.
Green symbols indicate external characteristics.

COLOR

D E F G H I J Faint Very Light Light

CLARITY

IF WS 1-2 VS 1-2 SI 1-2 I 1-3

Internally Flawless Very Very Slightly Included Very Slightly Included Slightly Included Included

