



ELECTRONIC COPY

LG723520798
Report verification at igi.org



July 21, 2025

IGI Report Number **LG723520798**

Description **LABORATORY GROWN DIAMOND**

Shape and Cutting Style **OVAL BRILLIANT**

Measurements **9.07 X 6.63 X 4.10 MM**

GRADING RESULTS

Carat Weight **1.56 CARAT**

Color Grade **FANCY VIVID PINK**

Clarity Grade **SI 1**

LABORATORY GROWN DIAMOND REPORT

July 21, 2025

IGI Report Number **LG723520798**

Description **LABORATORY GROWN DIAMOND**

Shape and Cutting Style **OVAL BRILLIANT**

Measurements **9.07 X 6.63 X 4.10 MM**

GRADING RESULTS

Carat Weight **1.56 CARAT**

Color Grade **FANCY VIVID PINK**

Clarity Grade **SI 1**

ADDITIONAL GRADING INFORMATION

Polish **EXCELLENT**

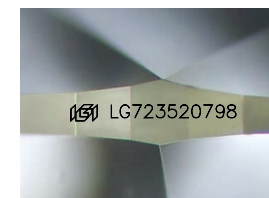
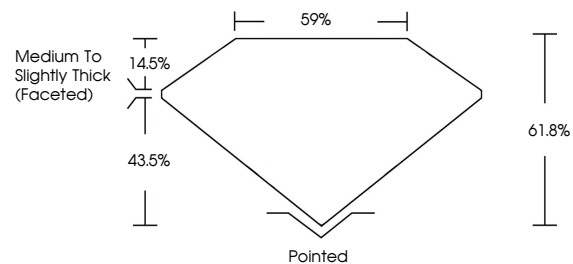
Symmetry **EXCELLENT**

Fluorescence **STRONG**

Inscription(s) **LG723520798**

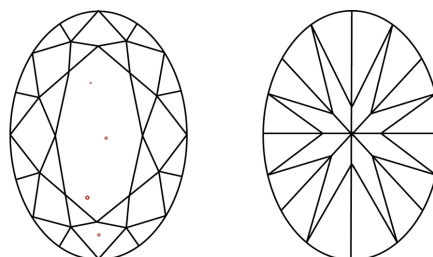
Comments: This Laboratory Grown Diamond was created by Chemical Vapor Deposition (CVD) growth process. Indications of post-growth treatment.

PROPORTIONS



Sample Image Used

CLARITY CHARACTERISTICS



KEY TO SYMBOLS

Red symbols indicate internal characteristics.
Green symbols indicate external characteristics.

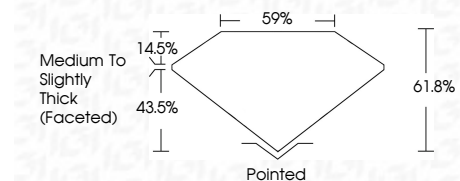
COLOR

D E F G H I J Faint Very Light Light

CLARITY

IF VS¹⁻² VS¹⁻² SI¹⁻² I¹⁻³

Internally Flawless Very Very Slightly Included Very Slightly Included Slightly Included Included



ADDITIONAL GRADING INFORMATION

Polish **EXCELLENT**

Symmetry **EXCELLENT**

Fluorescence **STRONG**

Inscription(s) **LG723520798**

Comments: This Laboratory Grown Diamond was created by Chemical Vapor Deposition (CVD) growth process. Indications of post-growth treatment.



July 21, 2025
IGI Report No LG723520798
OVAL BRILLIANT
9.07 X 6.63 X 4.10 MM
1.56 CARAT
FANCY VIVID PINK
SI 1
61.8%
59%
Medium to Slightly Thick (Faceted)
Pointed
EXCELLENT
EXCELLENT
STRONG
IGI LG723520798

Comments: This Laboratory Grown Diamond was created by Chemical Vapor Deposition (CVD) growth process. Indications of post-growth treatment.