



**ELECTRONIC COPY**

LG723522717  
Report verification at igi.org



July 17, 2025

IGI Report Number **LG723522717**

Description **LABORATORY GROWN DIAMOND**

Shape and Cutting Style **ROUND BRILLIANT**

Measurements **7.90 - 7.93 X 4.81 MM**

**GRADING RESULTS**

Carat Weight **1.82 CARAT**

Color Grade **D**

Clarity Grade **VS 1**

Cut Grade **IDEAL**

July 17, 2025

IGI Report Number **LG723522717**

Description **LABORATORY GROWN DIAMOND**

Shape and Cutting Style **ROUND BRILLIANT**

Measurements **7.90 - 7.93 X 4.81 MM**

**GRADING RESULTS**

Carat Weight **1.82 CARAT**

Color Grade **D**

Clarity Grade **VS 1**

Cut Grade **IDEAL**

**ADDITIONAL GRADING INFORMATION**

Polish **EXCELLENT**

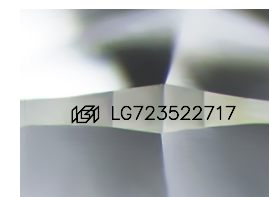
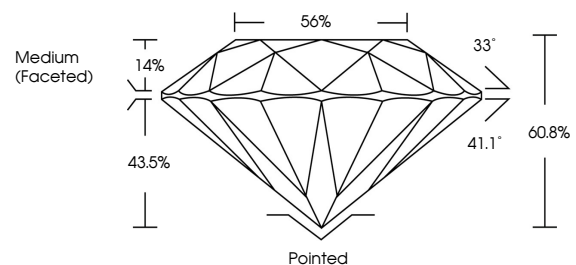
Symmetry **EXCELLENT**

Fluorescence **NONE**

Inscription(s) **LG723522717**

Comments: This Laboratory Grown Diamond was created by Chemical Vapor Deposition (CVD) growth process. Type IIa

**PROPORTIONS**



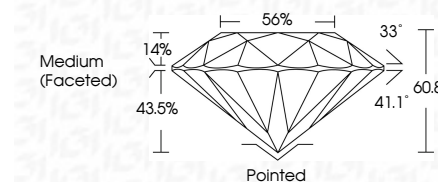
Sample Image Used

**COLOR**

D E F G H I J Faint Very Light Light

**CLARITY**

IF	VS <sup>1-2</sup>	VS <sup>1-2</sup>	SI <sup>1-2</sup>	I <sup>1-3</sup>
Internally Flawless	Very Very Slightly Included	Very Slightly Included	Slightly Included	Included



**ADDITIONAL GRADING INFORMATION**

Polish **EXCELLENT**

Symmetry **EXCELLENT**

Fluorescence **NONE**

Inscription(s) **LG723522717**

Comments: This Laboratory Grown Diamond was created by Chemical Vapor Deposition (CVD) growth process. Type IIa



**IGI**



July 17, 2025	IGI Report No LG723522717	1.82 CARAT	D	Pointed
ROUND BRILLIANT	7.90 - 7.93 X 4.81 MM	Color Grade	VS 1	EXCELLENT
		Clarity Grade	IDEAL	EXCELLENT
		Depth	60.8%	NONE
		Table	14%	None
		Girdle	Medium (Faceted)	None
		Culet		None
		Polish		None
		Symmetry		None
		Fluorescence		None
		Inscription(s)		None
				None

Comments: This Laboratory Grown Diamond was created by Chemical Vapor Deposition (CVD) growth process. Type IIa