



ELECTRONIC COPY

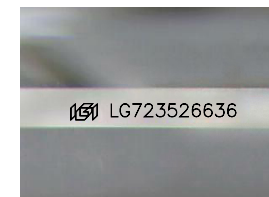
LG723526636
Report verification at igi.org



July 21, 2025
IGI Report Number **LG723526636**
Description **LABORATORY GROWN DIAMOND**
Shape and Cutting Style **PRINCESS CUT**
Measurements **7.95 X 7.82 X 5.74 MM**

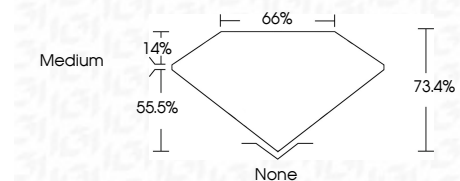
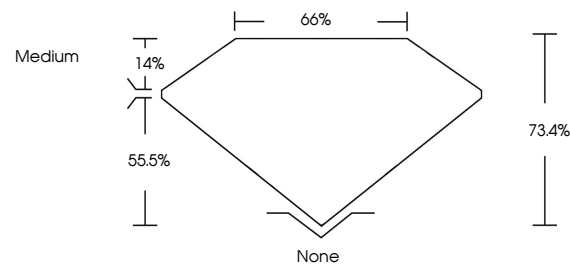
GRADING RESULTS

Carat Weight **3.09 CARATS**
Color Grade **H**
Clarity Grade **VVS 2**

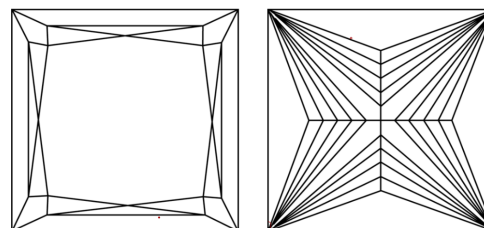


Sample Image Used

PROPORTIONS



CLARITY CHARACTERISTICS



KEY TO SYMBOLS

Red symbols indicate internal characteristics.
Green symbols indicate external characteristics.

COLOR

D E F G H I J Faint Very Light Light

CLARITY

IF	VS ¹⁻²	VS ¹⁻²	SI ¹⁻²	I ¹⁻³
Internally Flawless	Very Very Slightly Included	Very Slightly Included	Slightly Included	Included

ADDITIONAL GRADING INFORMATION

Polish **EXCELLENT**
Symmetry **EXCELLENT**
Fluorescence **NONE**
Inscription(s) **IGI LG723526636**
Comments: This Laboratory Grown Diamond was created by Chemical Vapor Deposition (CVD) growth process.
Type IIa



IGI



July 21, 2025
IGI Report No LG723526636
PRINCESS CUT
3.09 CARATS H
Carat Weight 7.95 X 7.82 X 5.74 MM
Color Grade VVS 2
Clarity Grade 73.4% 55%
Depth 66%
Table Medium
Girdle None
Culet None
Polish EXCELLENT
Symmetry EXCELLENT
Fluorescence NONE
Inscription(s) IGI LG723526636
Comments: This Laboratory Grown Diamond was created by Chemical Vapor Deposition (CVD) growth process.
Type IIa