



ELECTRONIC COPY

LABORATORY GROWN DIAMOND REPORT

LG723535373
Report verification at igi.org

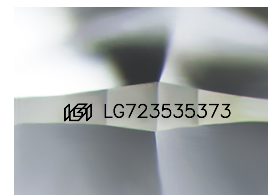
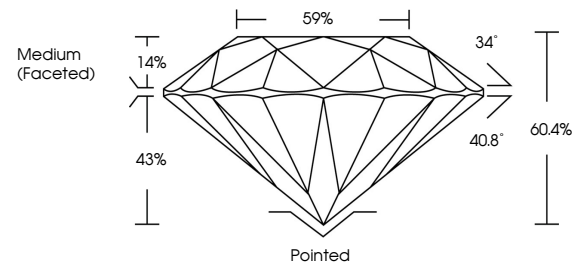
July 19, 2025	
IGI Report Number	LG723535373
Description	LABORATORY GROWN DIAMOND
Shape and Cutting Style	ROUND BRILLIANT
Measurements	7.50 - 7.53 X 4.54 MM
GRADING RESULTS	
Carat Weight	1.57 CARAT
Color Grade	E
Clarity Grade	VS 1
Cut Grade	IDEAL

ADDITIONAL GRADING INFORMATION

Polish	EXCELLENT
Symmetry	EXCELLENT
Fluorescence	NONE
Inscription(s)	 LG723535373

Comments: This Laboratory Grown Diamond was created by Chemical Vapor Deposition (CVD) growth process.
Type IIa

PROPORTIONS



Sample Image Used

COLOR

D E F G H I J Faint Very Light Light

CLARITY

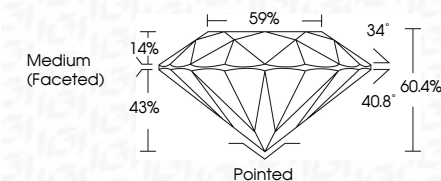
IF VS¹⁻² VS¹⁻² S¹⁻² |¹⁻³

Internally Flawless	Very Very Slightly Included	Very Slightly Included	Slightly Included	Included
------------------------	--------------------------------	---------------------------	----------------------	----------

LABORATORY GROWN DIAMOND REPORT



July 19, 2025	
IGI Report Number	LG723535373
Description	LABORATORY GROWN DIAMOND
Shape and Cutting Style	ROUND BRILLIANT
Measurements	7.50 - 7.53 X 4.54 MM
GRADING RESULTS	
Carat Weight	1.57 CARAT
Color Grade	E
Clarity Grade	VS 1
Cut Grade	IDEAL



ADDITIONAL GRADING INFORMATION

Polish	EXCELLENT
Symmetry	EXCELLENT
Fluorescence	NONE
Inscription(s)	 LG723535373
<p>Comments: This Laboratory Grown Diamond was created by Chemical Vapor Deposition (CVD) growth process.</p> <p>Type IIa</p>	



© IGI 2020, International Gemological Institute

FD - 10 20



THIS DOCUMENT WAS PRODUCED WITH THE FOLLOWING SECURITY MEASURES: SPECIAL DOCUMENT PAPER, INK SCREENS, WATERMARK, BACKGROUND DESIGNS, HOLOGRAM AND OTHER SECURITY FEATURES NOT LISTED AND DO EXCEED DOCUMENT SECURITY INDUSTRY GUIDELINES

www.igi.org

July 19, 2025
IGI Report No LG723535373
ROUND BRILLIANT

7.50 - 7.53 X 4.54 MM	1.57 CARAT
Carat Weight	VS 1
Color Grade	IDEAL
Clarity Grade	60.4%
Cut Grade	59%
Depth	Medium (Faceted)
Table	
Girdle	
Culet	Pointed
Polish	EXCELLENT
Symmetry	EXCELLENT
Fluorescence	NONE
Inscriptions	4641 1273935373

Comments:
This Laboratory Grown Diamond was created by Chemical Vapor Deposition (CVD) growth process.