



**ELECTRONIC COPY**

LG723539152  
Report verification at igi.org



July 19, 2025

IGI Report Number **LG723539152**

Description **LABORATORY GROWN DIAMOND**

Shape and Cutting Style **CUT CORNERED  
RECTANGULAR MODIFIED  
BRILLIANT**

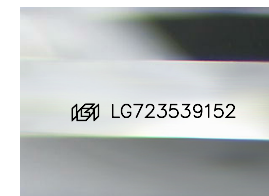
Measurements **8.18 X 5.58 X 3.86 MM**

**GRADING RESULTS**

Carat Weight **1.53 CARAT**

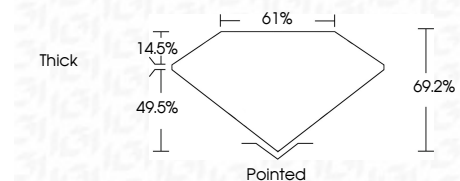
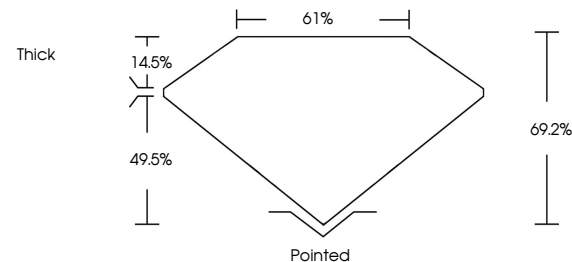
Color Grade **D**

Clarity Grade **VVS 1**



Sample Image Used

**PROPORTIONS**



July 19, 2025

IGI Report Number **LG723539152**

Description **LABORATORY GROWN DIAMOND**

Shape and Cutting Style **CUT CORNERED RECTANGULAR  
MODIFIED BRILLIANT**

Measurements **8.18 X 5.58 X 3.86 MM**

**GRADING RESULTS**

Carat Weight **1.53 CARAT**

Color Grade **D**

Clarity Grade **VVS 1**

**ADDITIONAL GRADING INFORMATION**

Polish **EXCELLENT**

Symmetry **EXCELLENT**

Fluorescence **NONE**

Inscription(s) **IGI LG723539152**

Comments: This Laboratory Grown Diamond was created by Chemical Vapor Deposition (CVD) growth process.  
Type IIa

**COLOR**

D E F G H I J Faint Very Light Light

**CLARITY**

IF	VS <sup>1-2</sup>	VS <sup>1-2</sup>	SI <sup>1-2</sup>	I <sup>1-3</sup>
Internally Flawless	Very Very Slightly Included	Very Slightly Included	Slightly Included	Included

**ADDITIONAL GRADING INFORMATION**

Polish **EXCELLENT**

Symmetry **EXCELLENT**

Fluorescence **NONE**

Inscription(s) **IGI LG723539152**

Comments: This Laboratory Grown Diamond was created by Chemical Vapor Deposition (CVD) growth process.  
Type IIa



**IGI**

July 19, 2025  
IGI Report No LG723539152  
CUT CORNERED RECT. MODIFIED BRILLIANT  
8.18 X 5.58 X 3.86 MM  
1.53 CARAT  
D  
VVS 1  
69.2%  
61%  
Thick  
Pointed  
EXCELLENT  
EXCELLENT  
NONE  
IGI LG723539152

Comments: This Laboratory Grown Diamond was created by Chemical Vapor Deposition (CVD) growth process.  
Type IIa