



ELECTRONIC COPY

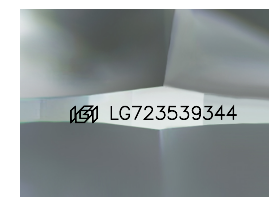
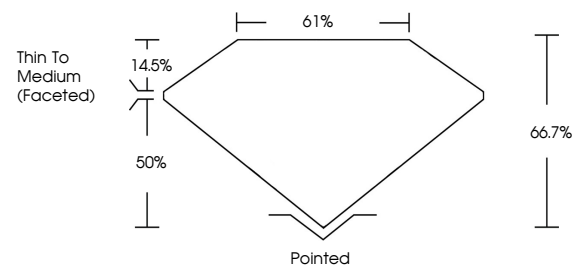
LG723539344
Report verification at igi.org



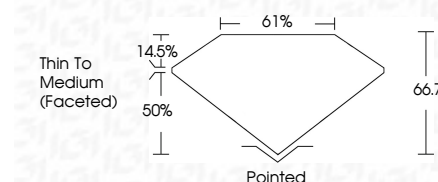
July 31, 2025
IGI Report Number **LG723539344**
Description **LABORATORY GROWN DIAMOND**
Shape and Cutting Style **SQUARE CUSHION MODIFIED BRILLIANT**
Measurements **8.67 X 8.55 X 5.70 MM**
GRADING RESULTS
Carat Weight **3.81 CARATS**
Color Grade **FANCY VIVID PINK**
Clarity Grade **SI 1**

July 31, 2025
IGI Report Number **LG723539344**
Description **LABORATORY GROWN DIAMOND**
Shape and Cutting Style **SQUARE CUSHION MODIFIED BRILLIANT**
Measurements **8.67 X 8.55 X 5.70 MM**
GRADING RESULTS
Carat Weight **3.81 CARATS**
Color Grade **FANCY VIVID PINK**
Clarity Grade **SI 1**

PROPORTIONS



Sample Image Used



ADDITIONAL GRADING INFORMATION

Polish **EXCELLENT**
Symmetry **EXCELLENT**
Fluorescence **STRONG**
Inscription(s) **IGI LG723539344**

Comments: This Laboratory Grown Diamond was created by Chemical Vapor Deposition (CVD) growth process.
Indications of post-growth treatment.

Secondary color: Brown

COLOR

D E F G H I J Faint Very Light Light

CLARITY

IF	VS ¹⁻²	VS ¹⁻²	SI ¹⁻²	I ¹⁻³
Internally Flawless	Very Very Slightly Included	Very Slightly Included	Slightly Included	Included

ADDITIONAL GRADING INFORMATION

Polish **EXCELLENT**
Symmetry **EXCELLENT**
Fluorescence **STRONG**
Inscription(s) **IGI LG723539344**
Comments: This Laboratory Grown Diamond was created by Chemical Vapor Deposition (CVD) growth process.
Indications of post-growth treatment.
Secondary color: Brown



July 31, 2025
IGI Report No **LG723539344**
SQUARE CUSHION MODIFIED BRILLIANT
3.81 CARATS
Carat Weight **FANCY VIVID PINK**
Color Grade **SI 1**
Depth **66.7%**
Table **61%**
Girdle **Thin To Medium (Faceted)**
Culet **Pointed**
Polish **EXCELLENT**
Symmetry **EXCELLENT**
Fluorescence **STRONG**
Inscription(s) **IGI LG723539344**

Comments: This Laboratory Grown Diamond was created by Chemical Vapor Deposition (CVD) growth process.
Indications of post-growth treatment.
Secondary color: Brown