



ELECTRONIC COPY

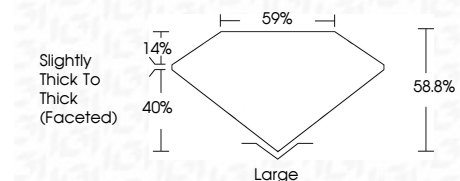
LG723546444
Report verification at igi.org



July 19, 2025
IGI Report Number **LG723546444**
Description **LABORATORY GROWN DIAMOND**
Shape and Cutting Style **OVAL MODIFIED BRILLIANT**
Measurements **8.05 X 5.66 X 3.33 MM**

GRADING RESULTS

Carat Weight **1.02 CARAT**
Color Grade **D**
Clarity Grade **VS 2**



ADDITIONAL GRADING INFORMATION

Polish **EXCELLENT**
Symmetry **EXCELLENT**
Fluorescence **NONE**
Inscription(s) **(IGI) LG723546444**
Comments: This Laboratory Grown Diamond was created by Chemical Vapor Deposition (CVD) growth process. Type IIa



July 19, 2025
IGI Report No LG723546444
OVAL MODIFIED BRILLIANT
8.05 X 5.66 X 3.33 MM
Carat Weight **1.02 CARAT**
Color Grade **D**
Clarity Grade **VS 2**
Depth **60.6%**
Table **67%**
Girdle **Slightly Thick To Thick (Faceted)**
Culet **Large**
Polish **EXCELLENT**
Symmetry **EXCELLENT**
Fluorescence **NONE**
Inscription(s) **(IGI) LG723546444**

Comments: This Laboratory Grown Diamond was created by Chemical Vapor Deposition (CVD) growth process. Type IIa

LABORATORY GROWN DIAMOND REPORT

July 19, 2025
IGI Report Number **LG723546444**
Description **LABORATORY GROWN DIAMOND**
Shape and Cutting Style **OVAL MODIFIED BRILLIANT**
Measurements **8.05 X 5.66 X 3.33 MM**

GRADING RESULTS

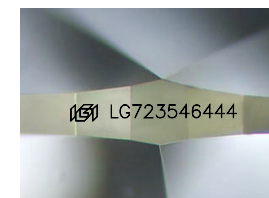
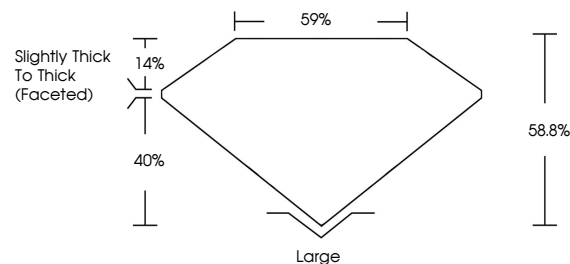
Carat Weight **1.02 CARAT**
Color Grade **D**
Clarity Grade **VS 2**

ADDITIONAL GRADING INFORMATION

Polish **EXCELLENT**
Symmetry **EXCELLENT**
Fluorescence **NONE**
Inscription(s) **(IGI) LG723546444**

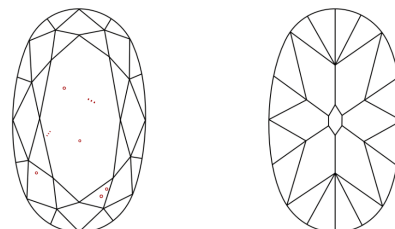
Comments: This Laboratory Grown Diamond was created by Chemical Vapor Deposition (CVD) growth process. Type IIa

PROPORTIONS



Sample Image Used

CLARITY CHARACTERISTICS



KEY TO SYMBOLS

Red symbols indicate internal characteristics.
Green symbols indicate external characteristics.

COLOR

D E F G H I J Faint Very Light Light

CLARITY

IF	VS ¹⁻²	VS ¹⁻²	SI ¹⁻²	I ¹⁻³
Internally Flawless	Very Very Slightly Included	Very Slightly Included	Slightly Included	Included

