



ELECTRONIC COPY

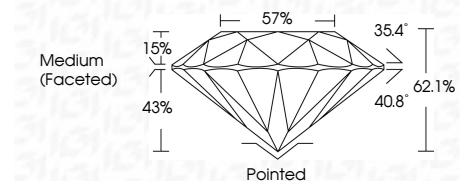
LG723548114
Report verification at igi.org



July 21, 2025
IGI Report Number LG723548114
Description LABORATORY GROWN DIAMOND
Shape and Cutting Style ROUND BRILLIANT
Measurements 10.12 - 10.16 X 6.30 MM

GRADING RESULTS

Carat Weight 4.00 CARATS
Color Grade D
Clarity Grade VS 2
Cut Grade IDEAL

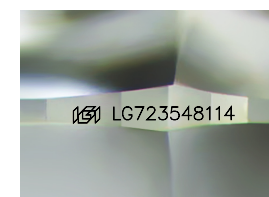


ADDITIONAL GRADING INFORMATION

Polish EXCELLENT
Symmetry EXCELLENT
Fluorescence NONE
Inscription(s) IGI LG723548114
Comments: HEARTS & ARROWS
This Laboratory Grown Diamond was created by Chemical Vapor Deposition (CVD) growth process. Type IIa

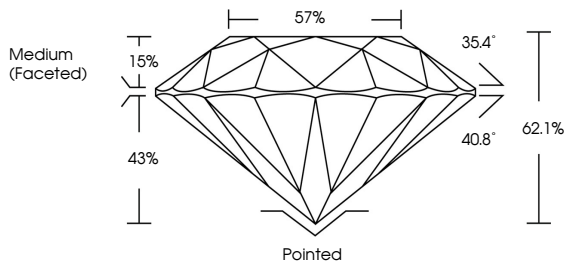


July 21, 2025
IGI Report No LG723548114
ROUND BRILLIANT
10.12 - 10.16 X 6.30 MM
4.00 CARATS
D
VS 2
IDEAL
62.1%
57%
Medium (Faceted)
Pointed
EXCELLENT
EXCELLENT
NONE
IGI LG723548114
Comments: HEARTS & ARROWS
This Laboratory Grown Diamond was created by Chemical Vapor Deposition (CVD) growth process. Type IIa

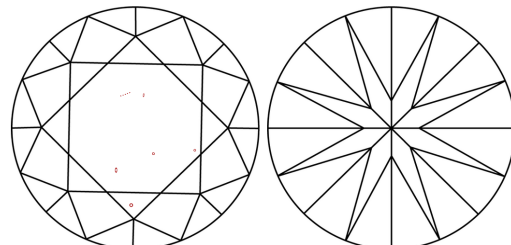


Sample Image Used

PROPORTIONS



CLARITY CHARACTERISTICS



KEY TO SYMBOLS

Red symbols indicate internal characteristics.
Green symbols indicate external characteristics.



COLOR

Table with color grades D, E, F, G, H, I, J and corresponding descriptions: Flawless, Very Very Slightly Included, Very Slightly Included, Slightly Included, Included.

CLARITY

Table with clarity grades IF, VS 1-2, V 1-2, SI 1-2, I 1-3 and corresponding descriptions: Internally Flawless, Very Very Slightly Included, Very Slightly Included, Slightly Included, Included.



July 21, 2025
IGI Report Number LG723548114
Description LABORATORY GROWN DIAMOND
Shape and Cutting Style ROUND BRILLIANT
Measurements 10.12 - 10.16 X 6.30 MM

GRADING RESULTS

Carat Weight 4.00 CARATS
Color Grade D
Clarity Grade VS 2
Cut Grade IDEAL

ADDITIONAL GRADING INFORMATION

Polish EXCELLENT
Symmetry EXCELLENT
Fluorescence NONE
Inscription(s) IGI LG723548114

Comments: HEARTS & ARROWS
This Laboratory Grown Diamond was created by Chemical Vapor Deposition (CVD) growth process. Type IIa