



ELECTRONIC COPY

LG723548274 Report verification at igi.org



July 19, 2025 IGI Report Number LG723548274 Description LABORATORY GROWN DIAMOND Shape and Cutting Style SQUARE CUSHION MODIFIED BRILLIANT Measurements 7.02 X 6.85 X 4.58 MM GRADING RESULTS Carat Weight 1.71 CARAT Color Grade D Clarity Grade VS 1

LABORATORY GROWN DIAMOND REPORT

July 19, 2025 IGI Report Number LG723548274 Description LABORATORY GROWN DIAMOND Shape and Cutting Style SQUARE CUSHION MODIFIED BRILLIANT Measurements 7.02 X 6.85 X 4.58 MM

GRADING RESULTS

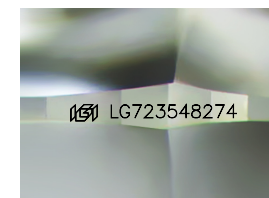
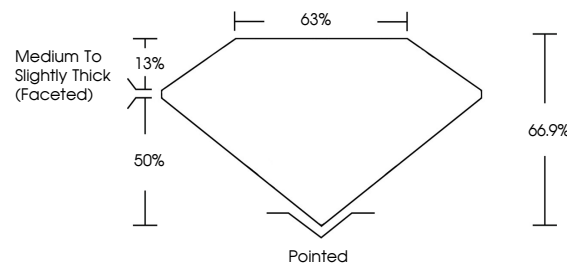
Carat Weight 1.71 CARAT Color Grade D Clarity Grade VS 1

ADDITIONAL GRADING INFORMATION

Polish EXCELLENT Symmetry EXCELLENT Fluorescence NONE Inscription(s) IGI LG723548274

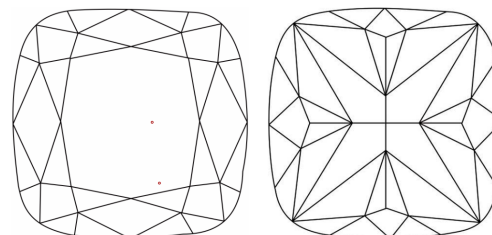
Comments: This Laboratory Grown Diamond was created by Chemical Vapor Deposition (CVD) growth process. Type IIa

PROPORTIONS



Sample Image Used

CLARITY CHARACTERISTICS



KEY TO SYMBOLS

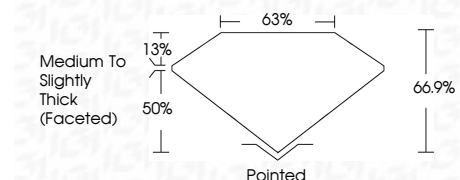
Red symbols indicate internal characteristics. Green symbols indicate external characteristics.

COLOR

D E F G H I J Faint Very Light Light

CLARITY

IF WS 1-2 VS 1-2 SI 1-2 I 1-3 Internally Flawless Very Very Slightly Included Very Slightly Included Slightly Included Included



ADDITIONAL GRADING INFORMATION

Polish EXCELLENT Symmetry EXCELLENT Fluorescence NONE Inscription(s) IGI LG723548274 Comments: This Laboratory Grown Diamond was created by Chemical Vapor Deposition (CVD) growth process. Type IIa



July 19, 2025 IGI Report No LG723548274 SQUARE CUSHION MODIFIED BRILLIANT 7.02 X 6.85 X 4.58 MM 1.71 CARAT D VS 1 66.9% 63% Medium to Slightly Thick (Faceted) Pointed EXCELLENT EXCELLENT NONE NONE IGI LG723548274 Comments: This Laboratory Grown Diamond was created by Chemical Vapor Deposition (CVD) growth process. Type IIa