



**ELECTRONIC COPY**

LG723549593  
Report verification at igi.org



July 19, 2025

IGI Report Number **LG723549593**

Description **LABORATORY GROWN DIAMOND**

Shape and Cutting Style **CUT CORNERED  
RECTANGULAR MODIFIED  
BRILLIANT**

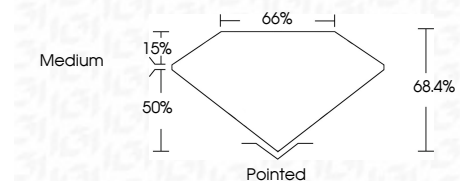
Measurements **8.46 X 5.94 X 4.06 MM**

**GRADING RESULTS**

Carat Weight **1.77 CARAT**

Color Grade **D**

Clarity Grade **VS 2**



**ADDITIONAL GRADING INFORMATION**

Polish **EXCELLENT**

Symmetry **EXCELLENT**

Fluorescence **NONE**

Inscription(s) **IGI LG723549593**

Comments: This Laboratory Grown Diamond was created by Chemical Vapor Deposition (CVD) growth process. Type IIa



|               |                                     |                                       |                       |            |   |      |       |     |        |         |           |           |      |                 |
|---------------|-------------------------------------|---------------------------------------|-----------------------|------------|---|------|-------|-----|--------|---------|-----------|-----------|------|-----------------|
| July 19, 2025 | IGI Report No LG723549593           | CUT CORNERED RECT. MODIFIED BRILLIANT | 8.46 X 5.94 X 4.06 MM | 1.77 CARAT | D | VS 2 | 68.4% | 50% | Medium | Pointed | EXCELLENT | EXCELLENT | NONE | IGI LG723549593 |
| IGI           | INTERNATIONAL GEMOLOGICAL INSTITUTE | 1975                                  |                       |            |   |      |       |     |        |         |           |           |      |                 |

Comments: This Laboratory Grown Diamond was created by Chemical Vapor Deposition (CVD) growth process. Type IIa

**LABORATORY GROWN DIAMOND REPORT**

July 19, 2025  
IGI Report Number **LG723549593**  
Description **LABORATORY GROWN DIAMOND**  
Shape and Cutting Style **CUT CORNERED RECTANGULAR  
MODIFIED BRILLIANT**  
Measurements **8.46 X 5.94 X 4.06 MM**

**GRADING RESULTS**

Carat Weight **1.77 CARAT**

Color Grade **D**

Clarity Grade **VS 2**

**ADDITIONAL GRADING INFORMATION**

Polish **EXCELLENT**

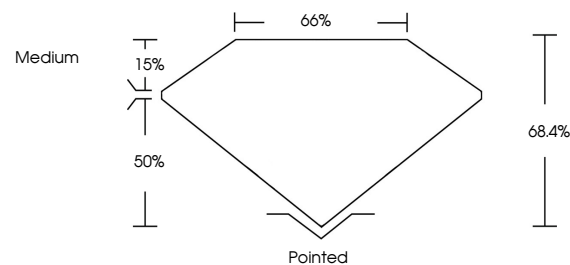
Symmetry **EXCELLENT**

Fluorescence **NONE**

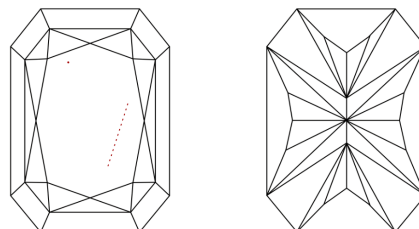
Inscription(s) **IGI LG723549593**

Comments: This Laboratory Grown Diamond was created by Chemical Vapor Deposition (CVD) growth process. Type IIa

**PROPORTIONS**

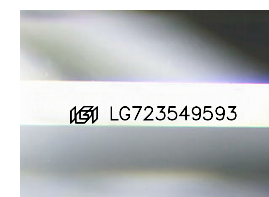


**CLARITY CHARACTERISTICS**



**KEY TO SYMBOLS**

Red symbols indicate internal characteristics.  
Green symbols indicate external characteristics.



Sample Image Used

**COLOR**

D E F G H I J Faint Very Light Light

**CLARITY**

|                     |                             |                        |                   |                  |
|---------------------|-----------------------------|------------------------|-------------------|------------------|
| IF                  | VS <sup>1-2</sup>           | VS <sup>1-2</sup>      | SI <sup>1-2</sup> | I <sup>1-3</sup> |
| Internally Flawless | Very Very Slightly Included | Very Slightly Included | Slightly Included | Included         |

